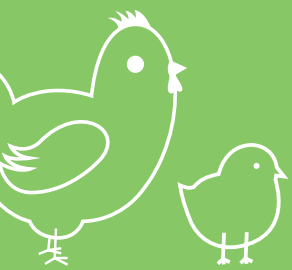




HOBBYFARMING

2022





KERBL - THE PARTNER FOR ALL HOBBY FARMERS

Should there ever be a problem, however, our service team will do everything they can to resolve your issue.

Our team of developers devote themselves daily to the needs of humans and animals in order to constantly improve our range and to transform innovative ideas into useful products.

Service

Development

Marketing

Production

Without our passionate sales team, our products would never reach humans or animals. We are particularly proud of our large number of long-term relationships with customers.

All of the products that we do not make ourselves come from cooperations with our partners of many years' standing, most of whom have been supporting us since our business first opened.



Poultry Farming

Sustainable poultry drinkers and troughs, poultry troughs, frost-free poultry drinkers, drinkers and troughs for quail, feed troughs and automats, poultry-keeping products, hygiene and care, pigeon breeding, egg incubators, chick rearing, poultry netting, safety in the chicken coop, poultry pens, laying nests

4 - 54



Rabbit Keeping

Rabbit hutches, outdoor pens, feeders and racks, troughs and drinkers, cage accessories

56 - 72



Llama and alpaca husbandry

Stable and Care Supplies, Accessories

73 - 74



Sheep Farming

Hoof care, coat care, water bowls, troughs and racks, pasture supplies, Litzclip®

76 - 93



Garden equipment

Useful helpers for gardens and vegetable plots

94 - 96

Explanation of our packaging and sales units.

MOQ	Pieces / unit	€
1 blister pack	Pack of 6	Price per pack
1 pouch	Pouch of 10	Price per pouch
12 items	Pouch of 12	Price per item
1 pack	Pack of 30	Price per pack
40 items	Pack of 40	Price per item
1 box	Box of 5	Price per box
8 items	Box of 8	Price per item
1 display	Display of 10	Price per display
6 items	Display of 6	Price per item



OU

Order unit for retail

Always order a multiple of the number stated (e.g. OU = 12 items, order in lots of 12).



Items/pack unit

No. of items per order unit/pack unit



Price/€

Price per OU

If the OU column is empty or missing, the price is per item.
All prices provided are the manufacturer's recommended retail prices and are inclusive of VAT.

Warranty

The warranty information in this catalogue is based on the general warranty conditions of Albert Kerbl GmbH. The current version of the general warranty conditions can be found at: <https://www.kerbl.com/guarantee>. These can also be sent electronically or by post on request.

Better product presentation with videos, 360° photo player and downloads

Product videos

You can now find out even more about our products in appealing, informative and attractive product videos.

All features and functions are shown live in action. We also present areas of use that some people may previously have been unaware of. Explanatory and installation videos facilitate operation and clarify features. In this way, we are trying to answer questions on products in advance and also provide you with real added value.

Product images

While we can only show you basic illustrations of a product in our catalogue, we can also provide you with digital copies of further photos showing detailed views and usage, for example.

Downloads

You will find downloads beneath the product description. Here, you will find further information such as user guides.



360° photo player

We are also offering complete 360° views of selected products in addition to our high-resolution professional product photos.

This gives you the option of viewing the product in advance from all sides and in extreme close-up, in high resolution and in sharp focus. Although you still cannot touch it, you can get a much better, more realistic feel for the product.

3D showroom

We would be happy to talk to our customers in person and show them our products. Unfortunately, however, this is not always possible. With our digital showroom, we would like to offer you the opportunity to make your own comprehensive impression of the product range. In our 3D showroom, you can immerse yourself in the worlds of Kerbl products.





Professional product advice

Do you require specific advice on our products?

Our specially trained product experts are available for your questions and can provide detailed information at any time via phone or e-mail.

For more information about these product areas, please go to our website.

Hobby Farming		
Germany:	+49 8086 933-323	hobbyfarming@kerbl.com
Austria:	+43 4224 81555-655	hobbyfarming@kerbl-austria.at
International:	+49 8086 933-323	hobbyfarming@kerbl.com



Kerbl goes Social Media

You too can find us on social media, on Facebook, Instagram and YouTube. This way, you won't miss out on Kerbl's latest news about our company, products and activities.

You can find an overview of all social media channels at:
<https://www.kerbl.de/socialmedia>





A great chicken coop!

I dream of a chicken yard, of poultry, ducks, fresh chicken's eggs in the coop – simply of bringing life into my garden!

Your own chicken yard

Do you want to discover and experience the changing seasons and cycle of life with your loved ones? Do you have a suitable area near your home so that you can easily take care of and monitor your animals? Then your own chicken yard is just the ticket!

The small world of the chicken yard – a dream full of wonderful fresh eggs, home-made products and shared moments with the children as they discover our pets.

Making this dream reality is actually not that complicated.

First, you'll need an area of a few square metres. Install the chicken coop there, which you have either bought or made yourself.

The same goes for feed and water troughs – simple, practical designs to make looking after your animals as easy as possible.

And then of course the chickens. You can choose from a variety

of different breeds. There is a whole world of colours, sizes, and egg colour and quality to discover.

If you want to buy chickens, you should contact a professional breeder or experienced amateur breeder, poultry breeding clubs or specialist stores. This is where you will meet real aficionados to give you advice on selecting the animals that best suit your project.

The Kerbl team is delighted to pass on our passion and breeding experience to you with these practical tips, and to suggest products that are perfect for setting up and maintaining your chicken yard.

Your own fresh eggs!

If you keep laying hens, you can quickly benefit from the advantages of having your own small breeding programme with few restrictions.

Poultry breeds.

All breeds of chickens lay eggs. However, breeders have been focussing on breeds specifically geared to lay eggs for almost 200 years now, whilst others are used for meat production. You should ideally clarify which breeds are best suited to your purposes with an experienced breeder.

Clutches.

A laying hen lays up to 300 eggs a year, the cycles depending on certain circumstances:

- Age of the animal: Hens lay their first eggs at the age of 5 to 7 months and then regularly up to the age of 2 to 3 years
- Season: The short days of winter slow down the laying rhythm, which then reaches its peak in the spring
- Their own rhythm: Hens lay in a cycle of 5 or 7 days (4 laying days and 1 rest day, or 5 laying days and 2 rest days)
- Food and water: A varied diet with grains (wheat, maize, oats, barley) and plants (grass, organic waste), bran mash or moistened bread promotes regular laying even in the winter. Sufficient clean drinking water must be provided.

Life rhythm.

Hens become active at sunrise and then have feeding, grooming, resting and of course laying phases. Sunset sees them back in the chicken coop where they sit on the perch and sleep. If you want to take a short holiday, feeders and drinking

troughs with stores can allow you to leave them alone for a few days. Otherwise, chicken coops shared with neighbours or friends are a good solution.

Eggs.

The eggs hens lay are a reflection of the diet and life of your animals. They can vary in flavour and colour depending on the season and feed composition. Eggs from your own laying hens have been neither transported nor stored. They are simply fresh eggs that you can eat up to 28 days after laying. The egg is an exceptionally wholesome food. Its proteins consist of 23 amino acids, 9 of which are essential as our bodies do not produce them themselves.



Poultry digestion

Chickens, ducks and other poultry may look very different but are quite similar when it comes to digestion.

Their beaks are adapted to their diet: short and hard for chickens and very long for ducks and geese.

Poultry are very special, at least when we observe their digestive systems. It starts, as with most living things, with chewing. Poultry don't have teeth, so the mechanical part of digesting food does not start in the beak. Mother Nature corrected this anatomical 'error' by giving them a gizzard.

Clean water and high-quality food provision are very important for good digestion.

Nutrition

Chickens mainly feed on grains (wheat and maize). They also find fresh plants and insects in their enclosure. Your chickens will love the organic waste from your kitchen – peel, fruit and vegetable stalks, salad leaves – and this also reduces your household waste.

Daily menu



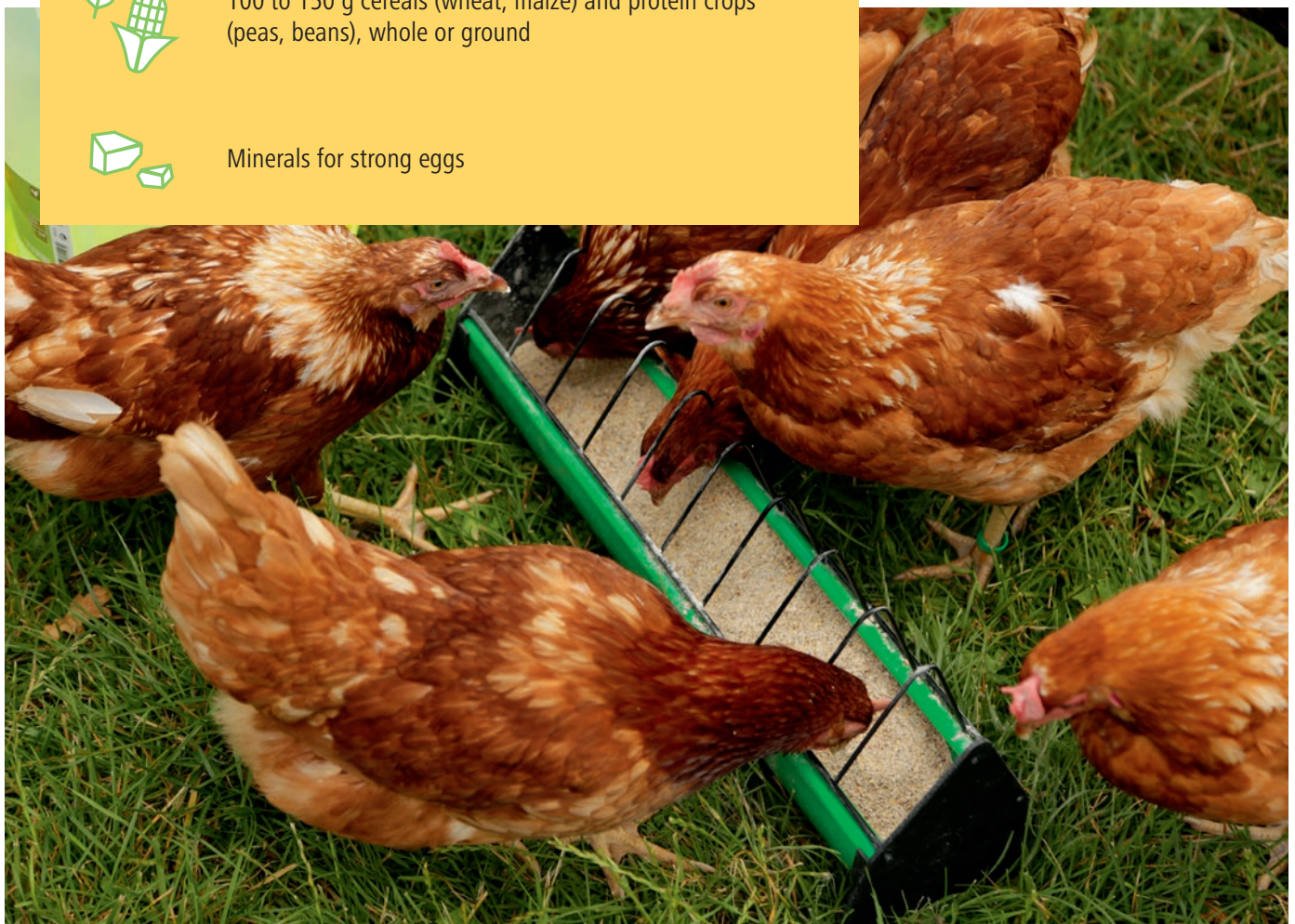
250 ml clean water, especially in summer



100 to 150 g cereals (wheat, maize) and protein crops (peas, beans), whole or ground

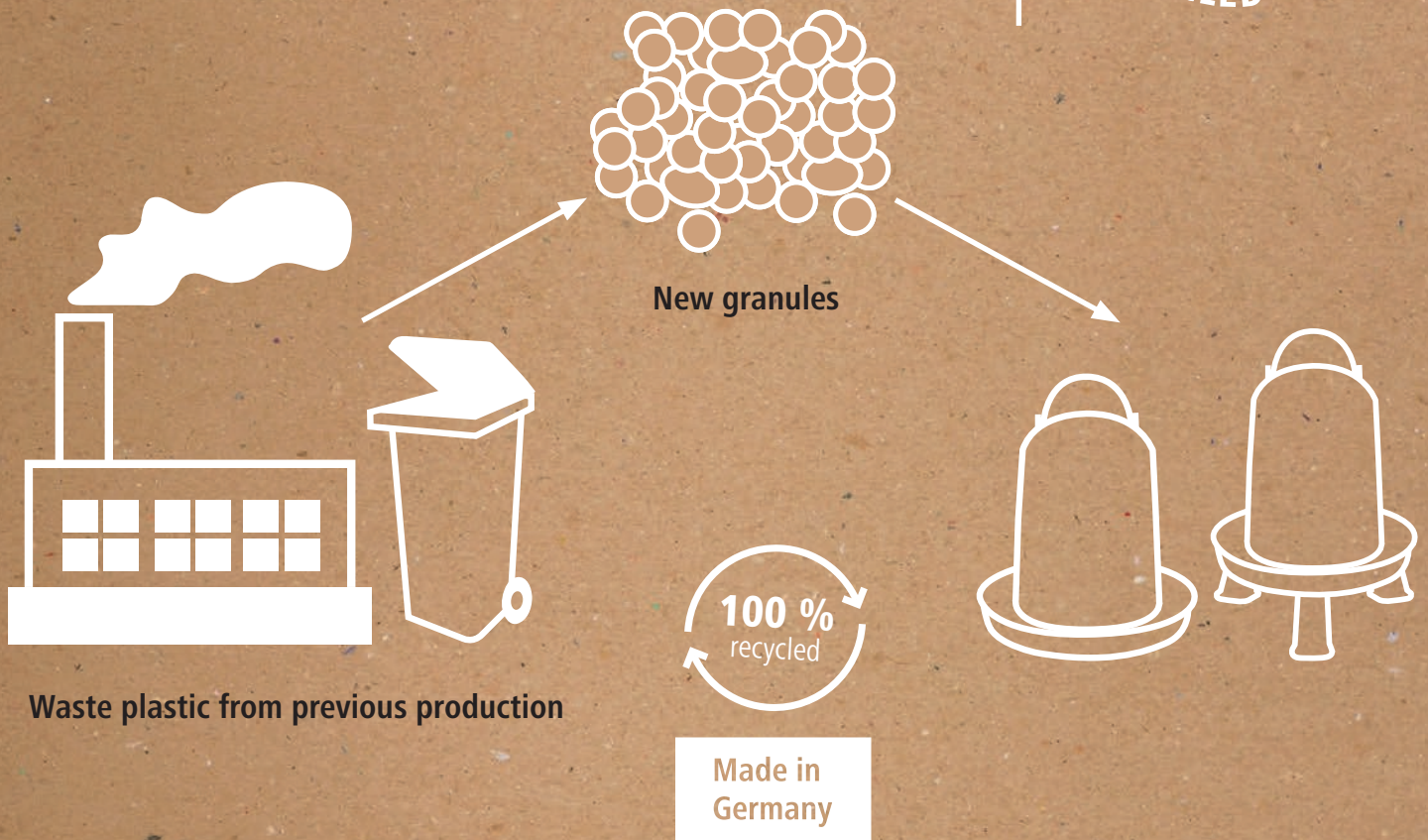


Minerals for strong eggs





Recycled plastic



Waste plastic from previous production

New granules

100 %
recycled

Made in
Germany

- ✓ environmentally friendly as fossil resource use is reduced
- ✓ low production waste, since this is recycled



Sustainable poultry bowls and troughs

Recycle Plastic Drinking Bowl

- orig. Stükerjürgen
- environmentally friendly as fossil resource use is reduced
- with proven bayonet lock
- also suitable for hanging, thus less soiling
- easy to clean and especially sturdy
- food safe
- Material: 100 % recycled plastic

New product

NEW

Made in Germany



Each water bowl has an individual colouring due to the sustainable recycling process

Ref. no.	Capacity	€
70157	1,5 L	
70158	3,5 L	
70159	5,5 L	

Ref. no.	Description	Material	Height	suitable for	€
70163	Base	recycled plastic	7 cm	70157, 70160	
70164	Feet 4-pce set	recycled plastic	8 cm	70158, 70159	

Recycle Feeder

- orig. Stükerjürgen
- environmentally friendly as fossil resource use is reduced
- with proven bayonet lock
- also suitable for hanging, thus less soiling
- a clamp-on grille prevents food waste
- easy to clean and especially sturdy
- food safe
- Material: 100 % recycled plastic

New product

NEW

Made in Germany



Each feeder has an individual colouring due to the sustainable recycling process

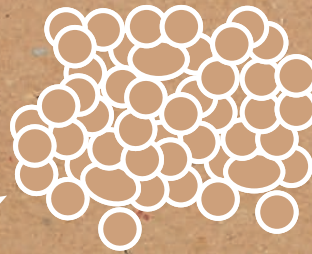
Ref. no.	Capacity	€
70160	1 kg	
70161	2,5 kg	
70162	4 kg	

Ref. no.	Description	Material	Height	suitable for	€
70163	Base	recycled plastic	7 cm	70157, 70160	
70165	Feet 4-pce set	recycled plastic	8 cm	70161, 70162	

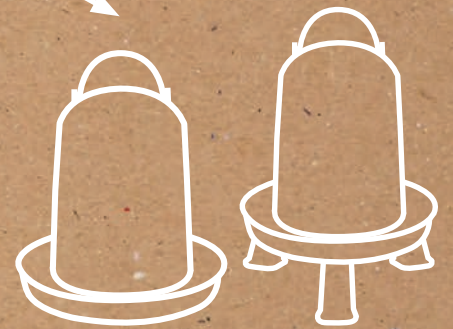
Organic plastic



Sugar cane



Granules



Made in
Germany

min. 94 % sustainably grown raw
materials
100 % recyclable

- ✓ environmentally friendly as fossil resource use is reduced
- ✓ sugar cane traps CO₂ from the air as it grows
→ 1 ton of material traps up to 3.09 tons of CO₂



Sustainable poultry bowls and troughs

Organic Plastic Drinker

- orig. Stükerjürgen organic water bowl
- with proven bayonet lock
- also suitable for hanging, thus less soiling
- easy to clean and especially sturdy
- food safe
- Material: Organic Plastic

Made in Germany



Ref. no.	Colour	Capacity	€
70140	white / green	1,5 L	
70141	white / green	3,5 L	
70142	white / green	5,5 L	

Organic Feeder

- orig. Stükerjürgen organic feeder
- with proven bayonet lock
- also suitable for hanging, thus less soiling
- a clamp-on grille prevents food waste
- easy to clean and especially sturdy
- food safe
- Material: Organic Plastic

Made in Germany



Ref. no.	Colour	Capacity	€
70144	white / green	1 kg	
70145	white / green	2,5 kg	
70146	white / green	4 kg	

Feet and bases for organic drinkers and organic feeders

Material: Organic plastic



Ref. no.	Description	Material	Height	can be used for	€
70143	Feet 4-pce set	Organic Plastic	8 cm	70141, 70142	
70147	Base	Organic Plastic	7 cm	70140, 70144	
70148	Feet 4-pce set	Organic Plastic	8 cm	70145, 70146	

SmartCoop Poultry Waterer

New product

NEW

The SmartCoop poultry drinker ensures your chickens have constant safe access to clean drinking water. The high-quality drinking nipples are very smooth-running and allow a natural scooping movement for the chickens. In combination with the SmartCoop system, the water can be kept frost-free all year round and the level can be monitored in real time.

- plug-in, threadless and sealed lid prevents mites from settling in
- wall bracket for space-saving and secure mounting
- drip tray for collecting excess water
- drip tray rotatable for use as a step for chicks
- sturdy, food-safe canister with carrying handle for comfortable handling
- little space required, can also be accommodated well in small stables
- Easy to clean



SmartCoop-compatible: an integrated, sealed cable entry allows the water bowl to be retrofitted with the SmartCoop water bowl heater and a level sensor

available from: June 2022

Ref. no.	Capacity	€
70651	10 L	



Poultry Waterer Kubic

Made in Italy



- large volume
- easy cleaning due to hinged and/or completely removable cover
- re-closable opening in the cover simplifies filling
- incl. float valve for checking the water level
- stable feet
- drinking plate approximately 20 cm above ground
- incl. siphon filter
- made of break-proof plastic
- easy and tool-free mounting
- food safe



Ref. no.	Colour	Capacity	€
70244	red / white	40 L	
70245	red / white	50 L	

Poultry Drinker Automatic

- for low-pressure line
- adjustable mounting
- for chick rearing and poultry fattening, laying hens and turkeys
- Hose Connector 1/2"
- with automatic water supply
- Material: Plastic

Made in Italy



for low-pressure line

Ref. no.	Colour	Height	Ø	€
70301	red / white	38 cm	38 cm	

Ref. no.	Description	€
70303	Valve for Poultry Drinker	

Poultry Waterer

- made of break-proof plastic
- filling from above
- stable feet
- drinking plate approximately 20 cm above ground
- handle makes it easier to move
- food safe

Made in Italy



adjustable water flow

Ref. no.	Colour	Capacity	Height	€
70233	red / white	30 L	70 cm	



Poultry Drinker Bucket

- food safe
- Material: Plastic
- with carrying handle

Made in Italy



71120



71117



72265

Ref. no.	Description	Colour	Capacity	€
71120	with stands	red / white	12 L	
71117	without feet	red / white	18 L	
72265	with stands	red / white	24 L	

Ref. no.	Description	suitable for	€
71144	Base	71117, 72248	

Poultry Waterer Rapid Clean

Made in Italy



- for hanging up
- easy to install and clean
- easy filling of water through the opening in the cover
- food safe
- Material: Plastic



Ref. no.	Colour	Capacity	€
72248	red / white	6 L	

Ref. no.	Description	suitable for	€
71144	Base	71117, 72248	

Plastic Waterer

Made in Italy



- for chicks and chickens
- easy to care
- food safe
- Material: Plastic



Ref. no.	Colour	Capacity	€
70202	white / red	1,5 L	
70203	white / red	3,5 L	
70205	white / red	5 L	
70210	white / red	10 L	

Plastic Waterer

Made in Germany



- orig. Stükerjürgen
- with proven bayonet lock
- also suitable for hanging, thus less soiling
- easy to clean and especially sturdy
- food safe
- Material: Plastic



Ref. no.	Colour	Capacity	€
70259	white / red	1,5 L	
70260	white / red	3,5 L	
70261	white / red	5,5 L	
70291	white / petrol	1,5 L	
70292	white / petrol	3,5 L	
70293	white / petrol	5,5 L	

Ref. no.	Description	Height	suitable for	€
70248	Feet 4-pce set		70260, 70261, 70292, 70293	
70247	Base	7 cm	70258, 70259, 70291, 70263, 70264	



Double Cylinder Drinker

- orig. Stükerjürgen
- with bayonet lock
- also suitable for hanging
- food safe
- Material: Plastic
- with handle

70297: with internal bayonet lock for optimum cleaning



Ref. no.	Colour	Capacity	€
70297	white / red	3 L	
70216	white / red	6 L	
70215	white / red	12 L	

Ref. no.	Description	Height	suitable for	€
70243	Feet 4-pce set	8 cm	70215, 70216	

Plastic Drinker with Feet

- with carry handle and proven bayonet closure
- includes feet, thus less soiling
- food safe
- Material: Plastic



Ref. no.	Colour	Capacity	€
70121	light green	1,5 L	
70122	light green	3 L	
70123	light green	5 L	
70124	light green	8 L	
70125	light green	10 L	

Plastic Drinker with Stopper

- easy to fill through closure at the base
- with carry handle and proven bayonet closure
- Easy to clean
- food safe
- Material: Plastic



Ref. no.	Colour	Capacity	€
70133	green	8 L	
70134	green	10 L	

Poultry Drinker Bucket

- removable upper part, thus easy to clean
- food safe
- Material: Plastic
- with carrying handle
- 2-piece



Ref. no.	Colour	Capacity	€
73135	light green	6 L	

Drinking Bowl and Feeding Bowl

- for exhibition cages etc.
- polished interior and exterior
- Material: Plastic
- Break-proof, shock-resistant
- food safe



Ref. no.	Colour	Capacity	€
71410	blue	0,3 L	

Water Bowl for Plastic Bottle

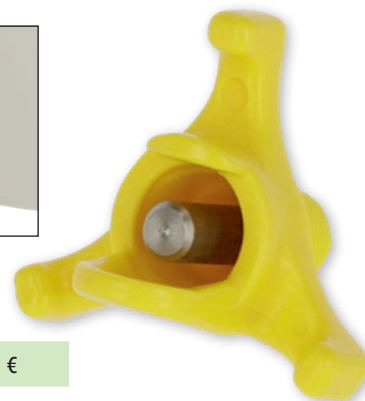
- suitable for bottles of up to 1.5 litres
- supplied without plastic bottle
- Material: Plastic
- food safe



Ref. no.	Colour	Ø	€
71115	red	23 cm	

Nipple Drinker

- with stainless steel pin
- incl. O-ring for sealing
- suitable for various water tanks with max. 1 cm wall thickness
- only requires a small Ø 10 mm hole
- for all types of poultry
- suitable for 4 - 5 chicken per trough
- Material: Plastic



Ref. no.	Length	Width	Height	MOQ	Pieces / unit	€
74181	33 mm	30 mm	34 mm	1 pouch	4 / pouch	

Universal Poultry Drinker

Turns buckets or any other water container into a poultry drinker!

- self-filling tank with a constant water level
- easy installation (only requires a small hole to be drilled in the water tank)
- for all types of poultry
- Material: Plastic

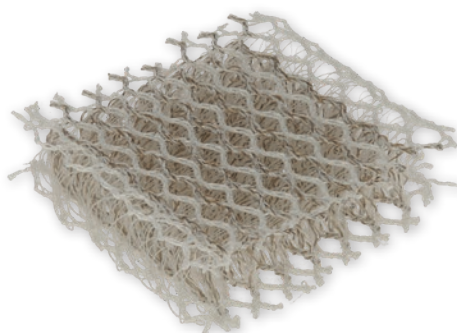


Ref. no.	Width	Height	€
70296	15 cm	7 cm	

silvertex® Good Water Anti-Germ Mat

The silvertex® Good Water Anti-Germ Mat is a silver-coated textile mat for conserving water in poultry drinkers. The self-dosing system ensures permanent protection from contamination and biofilms for up to 12 months. The antimicrobial action of silver ions means the silvertex® system conserves the drinking water in your poultry drinkers. Firstly, this improves the cleanliness of the water, which benefits animal welfare, and ensures lower maintenance costs.

- reliable protection against bacteria and biofilms
- universally usable in all poultry drinkers with a volume of up to 20 litres
- self-dosing up to 12 months
- conserves up to 3,600 litres of water
- no formation of toxic by-products
- easy handling



New product

NEW

Made in Germany



Take care when using biocides. Always read the label and product information before use!

Active ingredient

Silver

TV



Ref. no.	Length	Width	MOQ	Pieces / unit	€
73150	5 cm	5 cm			
73157	5 cm	5 cm	1 display	12 / display	



frost-free poultry drinkers

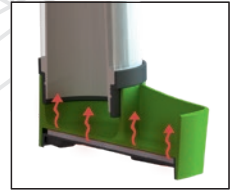
TV

Small animal bowls NoFrost Superior 2.0

heatable

- bottle has double insulated wall technology
- keeps the water frost-free down to 20 degrees
- coordinated heating power distribution in the drinker and bottle area
- insulated base for optimal heat distribution
- 8 Watt heating element integrated into the bowl
- with power pack for connection to a 230 V power supply
- safe 24 V operation
- easy handling as the connecting cable can be separated from the drinker using a plug
- incl. wire mount for easy drinking bottle assembly and disassembly
- suitable for all conventional wire meshes
- Cable length: 1.5 m
- Material: Plastic
- includes operating instructions

easy to fill bottle with screw connection, no spilling of the water possible



Ref. no.	Colour	Capacity	€
82738	green	330 ml	

Heating plate

- with 24 Volt power pack for connection to a 230 V power supply
- PU insulation for targeted heat dissipation upwards
- with slip-proof feet to ensure a secure stand for the heating plate
- with antislip stripes on the top to ensure a secure stand for the bowls
- Cable length: 2 m
- Material: Plastic

Technical data	
Voltage	24 V
Connecting Cable	2 m
Protection class	IPX4

Ref. no.	Colour	Heating output	Ø	€
70236	green	15 W	25 cm	
70237	green	22 W	30 cm	



Rubber heating plate for small animals and poultry

- with 24 Volt power pack for connection to a 230 V power supply
- slip-proof stand for various types of bowl
- extra robust design
- for keeping bowls frost-free and maintaining nest warmth
- Cable length: 2 m
- weather-proof

Technical data	
Voltage	24 V
Connecting Cable	2 m
Protection class	IPX7
Protection class	III



Ref. no.	Colour	Heating output	Length	Width	Height	€
70239	black	18 W	24 cm	24 cm	0,7 cm	

Quails

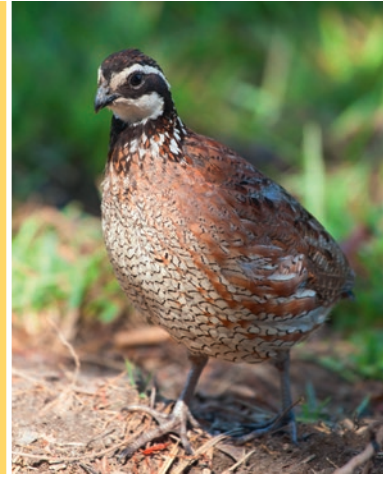
Breeding quails is great, these pretty birds with golden brown feathers are real miniature chickens. You need 3-5 females for 1 male for a small breeding programme.

Requirements for quails:

- 20 to 30 grams of protein-rich feed per day
- 30 to 50 ml water
- Plants, insects, fruits

Egg-laying:

- 200 to 300 eggs per year
- begin laying eggs from around 45 - 60 days old
- brooding period of around 17 - 19 days



Quail bowl

- orig. Stükerjürgen
- with automatic water supply
- with bayonet lock
- Easy to clean
- food safe
- Material: Plastic
- 2-piece

Made in Germany



Ref. no.	Colour	Capacity	€
70255	white / blue	1,5 L	
70256	white / blue	3,5 L	

Quail Feeder

- for quails, chicks and chickens
- food safe
- Material: Plastic
- 2-piece



Ref. no.	Colour	Capacity	€
73137	light green / white	1.000 ml	

Quail bowl

- for quails, chicks and chickens
- food safe
- Material: Plastic
- 2-piece



Ref. no.	Colour	Capacity	€
73136	light green / white	1.000 ml	

Feeding Troughs and Automatic Feeders

SmartCoop feeder with kick flap

New product **NEW**

The SmartCoop Feeder ensures your chickens have constant access to hygienic feed. Only when a chicken presses the step, the flap opens and allows feeding until the chicken lets go of the step again. The particularly narrow shape of the step can be grasped particularly well by small and large chickens, whereas rodents such as mice or rats find it much more difficult to access the feed. Compatibility with the SmartCoop system makes this feeder a unique all-rounder, ensuring an excellent supply of feed for the animals.

- protects the food from vermin, rodents and birds
- the feeder is opened by stepping on the flap
- closes automatically when the step flap is no longer actuated. Also works for lightweight chickens. the narrow step protects the mechanism from mice, rats and other rodents
- Material: robust, impact-resistant and durable plastic
- very hygienic and easy to clean
- wall bracket for space-saving and secure mounting, while at the same time allowing removal without tools
- Capacity can be easily expanded by means of attachment 70661. several attachments can be plugged on top of each other (not included in the scope of delivery)



70660

70661

70660 + 70661

SmartCoop-compatible: the feeder can be retrofitted with the SmartCoop fill level sensor and the SmartCoop feeder doser

Ref. no.	Capacity	€
70660	7,5 kg	

available from: June 2022



Ref. no.	Description	Material	Capacity	€
70661	Extension attachment	Plastic	7,5 kg	

Automatic Feeder with Feet

- for poultry in furnished cages • includes feet, thus less soiling • also suitable for hanging • food safe • Material: Plastic

Ref. no.	Colour	Capacity	€
70126	light green	2,4 L	
70127	light green	4,8 L	
70128	light green	9,6 L	
70129	light green	14,4 L	



Feeder

- suitable for standing and hanging • for chicks and chickens
- food safe • Material: Plastic • unassembled

Made in Italy



Ref. no.	Colour	Capacity	€
71125	yellow	2,5 L	
71126	yellow	5,25 L	
71118	yellow	10,5 L	
71116	yellow	20 L	



71125

71118

Feeding Troughs and Automatic Feeders

Automatic Feeder with Feet

- large volume
- easy cleaning due to hinged and/or completely removable cover
- stable feet
- easy and tool-free mounting
- food safe
- Material: Plastic



Ref. no.	Colour	Capacity	€
70276	yellow / green	30 L	
70277	yellow / green	50 L	

Automatic Feeder with Hinged Lid

- orig. Stükerjürgen
- with proven bayonet lock
- a clamp-on grille prevents food waste
- food safe
- Material: Plastic

Made in Germany



Ref. no.	Colour	Capacity	€
70278	white / green	4 kg	

Feeder

- orig. Stükerjürgen
- for quails, ornamental birds, dwarf chickens, etc.
- with bayonet lock
- a clamp-on grille prevents food waste
- food safe
- Material: Plastic

Made in Germany



Ref. no.	Colour	Capacity	Height	Ø	€
70258	white / green	1 kg	20 cm	20 cm	
70263	white / green	2,5 kg	24 cm	30 cm	
70264	white / green	4 kg	33 cm	30 cm	

Ref. no.	Description	Height	suitable for	€
70249	Feet 4-pce set		70263, 70264	
70247	Base	7 cm	70258, 70259, 70291, 70263, 70264	

Feeding Troughs and Automatic Feeders

Feeder

- incl. lid
- height-adjustable cylinder
- for standing
- feed intake can be adapted using the height adjustment
- Material: Plastic
- shatter-proof

Made in Italy



Ref. no.	Description	Colour	Capacity	Suitable for	€
70220	mounted	red / black	27 L	Chickens	
70221	mounted	red / black	15 L	Chicks	

Feeder

- for standing
- feed intake can be adapted using the height adjustment
- Material: Galvanised Metal

Made in Italy



Price on request.

Ref. no.	Description	Capacity	Suitable for	€
71101	mounted	5 L	Chicks	
71102	mounted	18 L	Chicks / Young chickens	
71103	mounted	40 L	Chickens / Turkeys	

Feeding Basket

- with holder
- Diameter: top 38 cm, bottom 14 cm
- Material: galvanised iron



Top Seller



Ref. no.	Height	€
70280	50 cm	

Feeding Troughs and Automatic Feeders

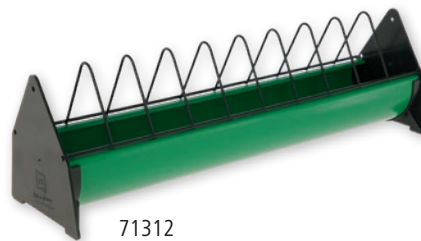
Feed trough

- orig. Stükerjürgen
- Material: Plastic

Made in Germany



71314

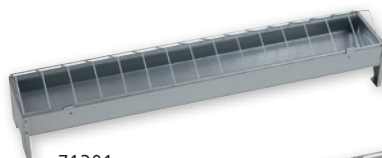


71312

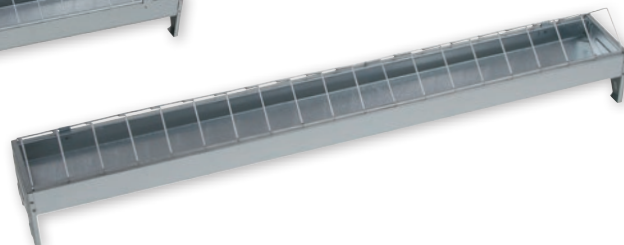
Ref. no.	Colour	Suitable for	Length	Width	€
71310	green / black	Chicks	50 cm	7 cm	
71312	green / black	Young chickens	50 cm	10 cm	
71313	green / black	Young chickens	75 cm	10 cm	
71318	green / black	Hens	50 cm	20 cm	
71314	green / black	Hens	75 cm	20 cm	
71315	green / black	Hens	100 cm	20 cm	

Feed trough

- Material: galvanised iron



71301



Ref. no.	Suitable for	Length	Width	€
71202	Chicks	50 cm	7 cm	
71301	Hens	50 cm	10 cm	
71302	Hens	75 cm	10 cm	
71303	Hens	100 cm	10 cm	

Feed trough

- food safe
- Material: Plastic

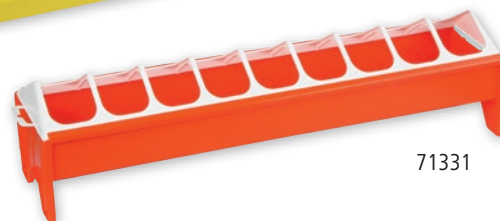
Made in Italy



71332



71330



71331

Ref. no.	Colour	Suitable for	Length	Width	€
71330	yellow	Chicks	50 cm	7 cm	
71331	orange	Young chickens	50 cm	12 cm	
71332	red	Chickens	75 cm	12 cm	

Mill Sprint

- flour mill
- can be used for all grain types
- highly resilient and at the same time lighter than its predecessor
- incl. fastening clip



Made in Italy



Ref. no.	Colour	€
73007	beige	

Grain Mill

- can be used for all grain types
- with dust-proof bucket: Capacity 18 litres, with handle and lid that automatically closes as soon as the bucket is removed from the device
- stable on three legs
- cutter with blades
- Voltage: 230 V

Made in Italy



1 x grain mill, 4 x sieve, Ø holes: 2.5 mm, 4 mm, 6 mm, 8 mm

750 watt grain mill about 40 % higher throughput rate than grain mill of 550 watts



70320



70321

approx. output/h:	Ø 2,5 mm	Ø 8 mm
550 watts	80 kg	250 kg
750 watts	130 kg	260 kg

Ref. no.	Colour	Capacity	Power	€
70320	orange / blue	18 L	550 W	
70321	blue / yellow	18 L	750 W	

Ref. no.	Description	Capacity	€
70322	Bucket for Grain Mill	18 L	

Plucking Machine

- robust Plucking Machine made of plastic suitable for all species of poultry
- roller with 24 fingers • the poultry is plucked quickly and effectively via the spinning of the fingers • incl. adjustable safety grill • with safety switch
- plucking capacity: approx. 80 chickens an hour • Voltage: 230 V • Mains frequency: 50 Hz



Made in Italy



Ref. no.	Working height	€
70506	79	

Scalding Pitch

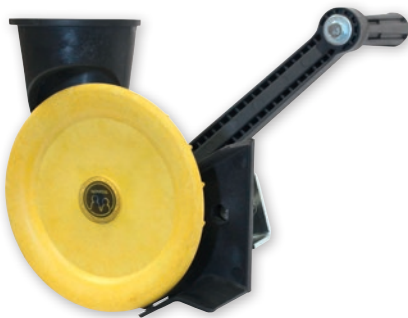
- ground
- for easy removal of bristles and feathers
- pure natural product
- without untypical additives



Ref. no.	Contents	€
29370	500 g / Cardboard	

Ginning device

- for ginning maize • with stable handle which makes using it easier • incl. fastening clip



Made in Italy



Ref. no.	Colour	€
73006	black / yellow	

Poultry Transport Box

- with side flap • suitable for chicks and smaller poultry species (such as quails, bantams etc.) • Material: Plastic

Made in Italy



Ref. no.	Colour	Dimensions	€
70279	brown	60 x 29 x 22 cm	

Poultry Transport Box

- with sliding door to box top side and side flap • Material: Plastic

Made in Italy



Ref. no.	Colour	Dimensions	€
73100	red / white	95 x 57 x 27,5 cm	

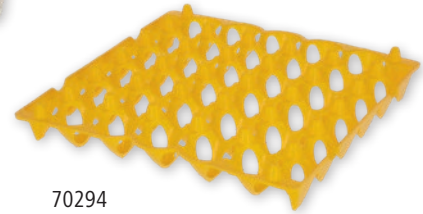


Egg Storage

- 30 egg capacity
- safe egg storage
- food safe



70295



70294

Ref. no.	Colour	Material	€
70294	yellow	Plastic	

Ref. no.	Description	Colour	Material	suitable for	€
70295	Bracket and stacking for egg storage	white	Plastic	70294	

Egg Transport Box

- for the safe transport and storage of the eggs
- 12 egg capacity
- for eggs up to size L
- food safe



Ref. no.	Colour	Material	€
73145	green transparent	Plastic	

Snack Ball

- for the meaningful occupation of chickens in the henhouse or cleared enclosures
- simple fill with granular chicken feed, wheat, corn or mealworms
- Size of the opening can be individually adjusted in 3 steps



Ref. no.	Colour	Material	Ø	€
73158	yellow	Plastic	7,5 cm	

NEW

Spiral Ring

- 3 x turned
- extra strong
- mixed = red, green, blue and yellow (25 pcs of each)
- Suitable for: Chickens / Turkeys / Pheasants



Ref. no.	Ø	Colour	MOQ	Pieces / unit	€
72315	12 mm	mixed	1 blister pack	100 / blister pack	
72316	16 mm	mixed	1 blister pack	100 / blister pack	
72317	20 mm	mixed	1 blister pack	100 / blister pack	
72101	16 mm	red	1 blister pack	20 / blister pack	
72102	16 mm	green	1 blister pack	20 / blister pack	
72103	16 mm	blue	1 blister pack	20 / blister pack	
72106	16 mm	yellow	1 blister pack	20 / blister pack	



Plastic Clip

- mixed = red, green, blue, white and yellow (20 pcs of each)
- Suitable for: Chickens / Turkeys / Pheasants

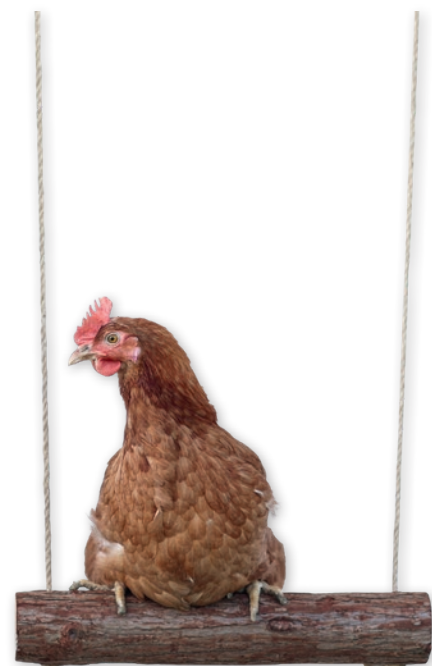


Ref. no.	Ø	Colour	MOQ	Pieces / unit	€
72350	8 mm	mixed	1 blister pack	100 / blister pack	
72351	12 mm	mixed	1 blister pack	100 / blister pack	
72352	16 mm	mixed	1 blister pack	100 / blister pack	



Chicken Swing

- for occupation in the stable or when exercising
- additional seat
- with two thin ropes each 300 cm for individual attachment depending on the desired height
- incl. two hooks for attaching to a wooden ceiling



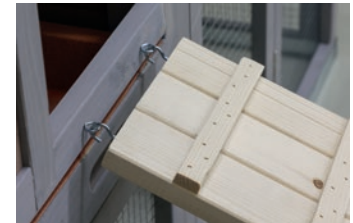
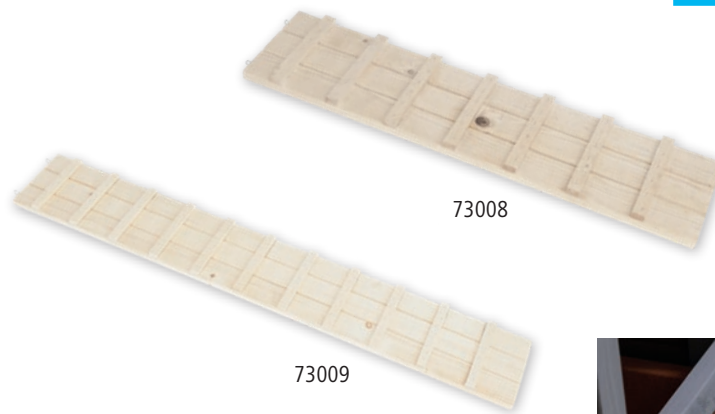
Ref. no.	Length	Ø	€
73141	39 cm	5 cm	

Chicken Ladder

- ideal for retrofitting to raised poultry houses
- cross rungs offer a secure grip
- Rung distance: 8 cm
- very sturdy design
- incl. screws for installation

New product

NEW



Ref. no.	Material	Length	Width	€
73008	Wood	75 cm	18 cm	
73009	Wood	115 cm	18 cm	

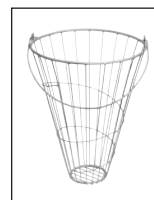
Spelt Briquettes

Litter and Occupational Material for Poultry

- promoted the animals' natural urge to play
- remains attractive and varied for all types of poultry
- can prevent aggressive behaviour and mutual pecking
- can be offered to the animals on the ground or in a hanging feed basket
- the briquettes disintegrate when chickens play with them and then serve as absorbent litter

New product

NEW



Ref. no.	MOQ	Pieces / unit	€
73152	1 pack	24 / pack	

Ref. no.	Description	Material	Height	€
70280	Feeding Basket	galvanised iron	50 cm	

Hook

for poultry

- tool for catching poultry
- easy, injury-free animal catching
- for gripping the leg
- with practical handle
- low weight
- Material: metal galvanised

New product

NEW



available from: March 2022

Ref. no.	Length	€
73153	111 cm	

EggBooster

Feed Supplement for Poultry

New product

NEW

Use EggBooster to support your animals with additional calcium and vitamins. EggBooster is recommended in the case of soft-shell and cracked eggs, during growth, the laying phase and moulting.

- can support bone stability and skeletal development support
- can promote eggshell quality
- the ideal supplement during breeding and moulting
- highly concentrated vitamins
- natural vitamin E
- essential oil (rosemary) as an antioxidant to assist in stressful situations
- economical consumption thanks to small amounts
- easy use via drinking water

Feeding recommendation:

- For soft-shell and cracked eggs: 10 ml (2 caps) per litre of drinking water for at least 14 days
- For the prevention of cracked eggs and during the growth phase: 5 ml (1 cap) per litre of drinking water 2-3 times a week



Ref. no.	Contents	€
73160	1000 ml / Bottle	

PowerBreath+

Feed Supplement for Poultry

New product

NEW

The essential oils included are beneficial and have a freeing effect on the respiratory system, strengthening the immune resistance in a natural way. This can contribute to the well-being of your animals.

- highly concentrated essential oils
- respiratory support
- Stimulates food intake
- Promotion of the secretion of digestive enzymes
- preventative use in times of stress, such as stabling, incoming weather changes and increased risk of disease
- ideally suited as a supplement for animals affected by ectoparasites (e.g. bird mites)
- economical consumption thanks to small amounts
- easy use via drinking water
- suitable dispenser (221054) available as an accessory

Feeding recommendation:

- dosage: 2 ml / litre of drinking water (2 caps per 5 litres of water) over 5 days. • If necessary, continue use for a further 10 days.

Ref. no.	Contents	€
73161	500 ml / Bottle	

Ref. no.	Description	€
221054	Dispenser	



Vitamin concentrate AD3EC

Vitamin concentrate for hens

- liquid vitamin concentrate for laying and young hens to support the preparation of oestrus and reproduction
- high content of vitamin A and D

Feeding recommendation:

In more demanding situations such as placing in pens, changes of feed and stressful situations, the maximum daily feed is: 100 young hens: 15 ml in 15 litres of water; 100 laying hens: 25 ml in 20 litres of water



Ref. no.	Contents	€
15784	500 ml / Bottle	
15777	1000 ml / Bottle	



cit Mite mist machine

For the control of mites in small stables

- simple to use thanks to independent drainage of the contents
- any hay etc. should not be changed, since objects and surfaces treated with pyrethrum will deter insects
- immediate, long-lasting effect

Tip: we recommend repeating the misting procedure in 4 to 5 days so that any hatching mites can also be destroyed. up to 50 m²/tin

Take care when using biocides. Always read the label and product information before use!

Active ingredient

Pyrethrin + Pyrethroids, Piperonyl butoxide, S-methoprene

Ref. no.	Contents	€
15438	400 ml / Spray Can	



cit Mite Powder Spray Mite-ExSil

- silicon dioxide attacks the wax layer on mites, causing them to desiccate and die
- aerosol spray allows the active ingredient to be applied accurately and especially in all corners and cracks
- Spray jet leaves behind a white layer of powder on sprayed areas.
- especially effective at combating poultry red mite, other types of poultry mite, fleas and ticks
- Listed in the supplies list for ecological agriculture in Germany.

suitable for organic farms



Take care when using biocides. Always read the label and product information before use!

Active ingredient

Silicon dioxide, Pyrethrin + Pyrethroids

Ref. no.	Contents	€
15448	500 ml / Spray Can	



cit Vermin Powder

Cit vermin powder is used for the control of crawling insects such as lice, beetles, wireworms, ants etc. Regular application ensures the containment of the vermin.

- kills all types of pest and has an excellent effect on resistance problems
- also effective against poultry red mite
- in a handy scatter tin - for use in cattle and pig pens
- kills all pests, including young and eggs

Take care when using biocides. Always read the label and product information before use!

Active ingredient
Cypermethrin

Ref. no.	Contents	€
15439	500 ml / Shaker	



Universal Plastic Tray

- smooth base allows for easy cleaning
- integrated side handles
- Material: Plastic

Usage as a sand bath for chickens:

- scratching and dust bathing are some of the natural behaviours of chickens and other poultry
- a sand bath is a species-appropriate occupation option and helps to increase the animals' welfare standard
- chickens maintain their plumage among other things by bathing in sand or earth, removing parasites such as lice and mites in the process
- fine sand, for example, is perfect for filling the chicken sand bath



Ref. no.	Colour	Length	Width	Height	Capacity	€
16536	blue	63 cm	39 cm	17 cm	29,5 L	

cit DiaCarid

to combat red fowl mites and crawling insects


- an effective pesticide to combat red fowl mites and crawling insects
- fine powder of fossil plankton works reliably even at high humidity
- direct contact with DiaCarid destroys the protective wax layer of the mites.
- the special structure makes it impossible to build up resistance
- sprinkle manually: 4 - 6 g / enclosure – use special device to sprinkle: 2 - 4 g/m²
- Listed in the supplies list for ecological agriculture in Germany.

Take care when using biocides. Always read the label and product information before use!

treats an area of 25 m²/ 100 g

Active ingredient
Silicon dioxide, Pyrethrin + Pyrethroids

Ref. no.	Contents	€
299799	100 g / Shaker	
299694	2000 g / Bucket	

suitable for organic farms 



Disinfectant INTERKOKASK®

Broad spectrum stable disinfectant against coccidia oozysts, roundworm eggs, bacteria, fungal infections, viruses

- ready-to-use solution • tested effectiveness • ideal for surfaces in veterinary practices and institutes in the small animal sector, such as for pigeon lofts and aviaries, chicken coops, for rabbit, hamster and guinea pig cages and dog houses • not to be sprayed on furniture in your living room • Application time: 2 hours (then wipe with a damp cloth or rinse thoroughly)

Take care when using biocides. Always read the label and product information before use!

Active ingredient

Chlorcresols

Ref. no.	Contents	€
299698	500 ml / Spray bottle	



cit Liquid Concentrate MilbaStop Ultra

For combating red fowl mite in poultry and other pens

- effective specially against the red mite in small animal cages, poultry and pigeon coops as well as cattle, horse and pig barns • pests are killed as soon as they come into contact with Milba Stop Ultra

How to use: Mix MilbaStop Ultra Spray Concentrate with water in the ratio 1:40. 250 ml MilbaStop Ultra = 10 litres solution = 300 m² stable floor area. Spray the areas affected by mites with the solution (stables, building cracks, manure etc.). Repeat treatment after 5-6 days. Works for up to 6 weeks!

Use with fogging equipment, e.g. cold fogger: Mix with water in the ratio 1:20. 5 litres of application solution for up to 2,500 m² of stable area.

up to 300 m² of stable floor (spraying)

Not suitable for direct use on animals!

Take care when using biocides. Always read the label and product information before use!

Active ingredient

Cypermethrin

Ref. no.	Contents	€
299738	250 ml / Bottle	



Anti-Aggression Spray No Fight

- for pig and poultry husbandry • covers the inherent smell of the animals and keeps things quiet in the stable

spray NoFight at a distance of 20 cm onto dividing walls and into the air, twice a day, until calm reigns

Ref. no.	Contents	€
22152	400 ml / Spray Can	



Pigeon husbandry and diet

Breeding pigeons is often a passion. Pigeons need care and attention.

You should provide a dovecote with 2 compartments and 2 nests for each pigeon pair. This means that the pigeon pair will begin a new brood before finishing the previous one. The front of the bird house should be oriented to catch as much sun as possible.

Traditional pigeon feed consists of grains (wheat, barley, maize) and peas. You can supplement this feed with minerals in block form: bird grit.

Pigeons perch all over the place and heavily pollute their environment with excrement. You therefore need to use special troughs and tubs to keep feed and water clean.

Egg-laying:

- 1-2 eggs (3-5 times a year)
- begin laying eggs from around 6 months old
- brooding period 17 days (rearing about 10 days)



Pigeon Drinker

• Material: Plastic



Made in Italy



Ref. no.	Colour	Capacity	€
70253	red / white	5 L	

Pigeon Feeder House

• Material: Plastic



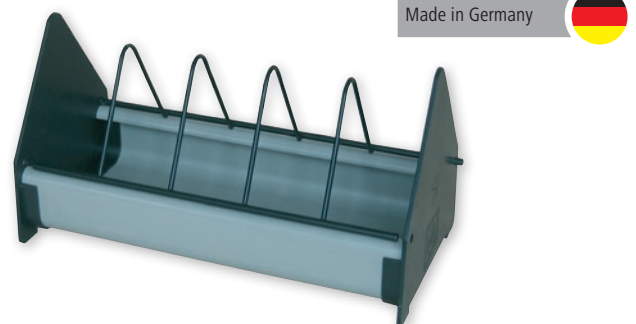
Made in Italy



Ref. no.	Colour	Capacity	€
70252	yellow / white	5 L	

Pigeon Feeding Trough

• orig. Stükerjürgen • folding feed grate prevents the trough from becoming quickly soiled • Material: Plastic



Made in Germany

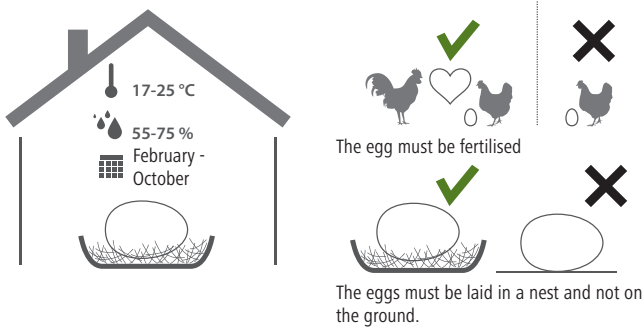


Ref. no.	Length	Width	Height	€
70218	25 cm	11,5 cm	14 cm	

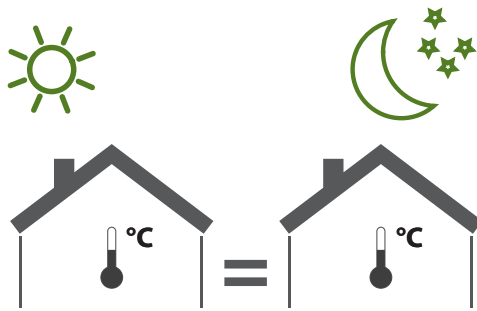
Using an egg incubator

Incubation

Temperature in the egg incubator 37.8 °C or 100 °F
Humidity 55 to 75 %



The best time to collect eggs for incubation is between February and October. The eggs must be of a normal size and have an intact shell. Retrieve the eggs from the nests and store them at a temperature of 15 to 18 °C before placing them in the incubator.

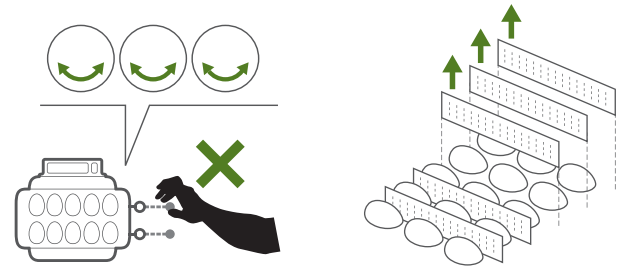


The place where you set up the incubator must be kept at a constant temperature of between 17 and 25 °C, and humidity levels between 55 and 75 %. The incubator should not be exposed to draughts. Switch the incubator on 24 hours before placing the first eggs into it, so that the temperature and humidity can level off.

Hatching

Incubation period

- chicken 21 days • quail 17 days
- Muscovy duck 28 days • turkey 30 days



Stop turning the eggs (or switch off the motor if the incubator is fitted with an automatic turner) three days before hatching.

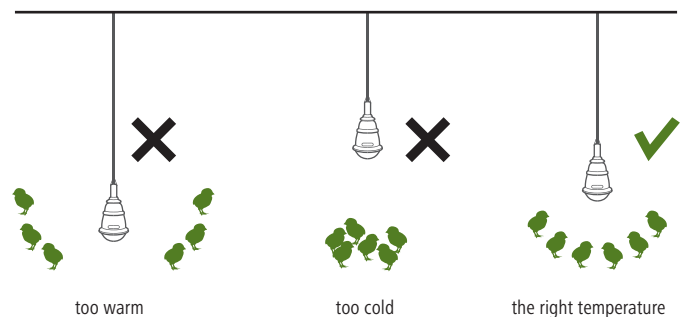
Remove the dividers and use the incubator's base to balance out the empty spaces. This prevents the just-hatched chicks from falling under the base plate or into the water tanks.

The first few days

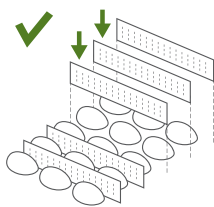
The newly hatched chicks should stay in the incubator for 24 hours so that their feathers can dry out. The incubator then serves as a nursery. The chicks must be reared in a heated area of between 18 and 25 °C during the first few months of life. Heat lamps are a perfect solution to keep the chicks at the correct temperature. They must always have plenty of clean water and suitable starter food.



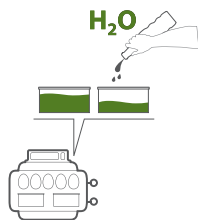
Thermal control for the chicks



Place the eggs into the incubator no earlier than 24 hours, and no later than 5 days, after they have been laid.



You can customise the incubator base to suit the size of the eggs using the dividers. Leave a little space between the eggs so that they can be turned twice a day and air can circulate.



The humidity required for the proper functioning of the incubator is ensured by the water tank(s) included. The water level in the tanks must be checked every two days and topped up if necessary.



Egg output max.	162 digital	108 digital	24 digital	Big	Maxi	16 L	16 L digital	7
Chicken	162	108	24	54	24	16	16	7
Goose	45	30	6	15	6	4	4	2
Duck	120	80	20	40	20	11	11	5
Turkey	96	64	16	32	16	10	10	5
Guinea Fowl	180	120	30	60	30	18	18	8
Pheasant	180	120	30	60	30	19	19	8
Partridge	252	168	42	84	42	26	26	15
quail	420	280	70	140	70	42	42	22

Egg Incubator Covatutto 162 digital

- equipped with 3 layers and mobile spacers for different egg sizes • Each layer can be operated with a separate motor • includes viewing window, interior light and a digital thermometer • tough and durable • each tray requires an actuator (not included) • a spacer, ordered separately, is required for quail eggs • 230 Volt Operation



Made in Italy

Ref. no.	Colour	€
73040	orange	

Ref. no.	Description	€
73041	Actuator for Egg Incubator	

Egg Incubator Covatutto 108 digital

- equipped with 2 layers and mobile spacers for different egg sizes • Each layer can be operated with a separate motor • includes viewing window, interior light and a digital thermometer • made from resistant and insulating material • each tray requires an actuator (not included) • 230 Volt Operation



Made in Italy

Ref. no.	Colour	€
72241	red	

Ref. no.	Description	€
73041	Actuator for Egg Incubator	

Egg Incubator Covatutto 24 digital

- tough and durable • Easy to clean • suitable for all egg types • up to 24 chicken eggs • digital thermometer • incl. manual egg turner, used to turn the eggs by 180° every hour • optional motor for the automatic rotation of eggs not included • 230 Volt Operation



Made in Italy

Ref. no.	Colour	€
73083	red	

Ref. no.	Description	€
73053	Actuator for Egg Incubator	

Egg Incubator Big

- made from resistant and insulating material • Easy to clean • built-in basin for humidity • suitable for all egg types • up to 54 chicken eggs • electronic thermostat • temperature display can be read from the outside • incl. manual egg turner, used to turn the eggs by 180° every hour • optional motor for the automatic rotation of eggs not included • 230 Volt Operation



Made in Italy

Ref. no.	Colour	€
73059	yellow	

Ref. no.	Description	€
73053	Actuator for Egg Incubator	

Egg Incubators

Egg Incubator Maxi

- made from resistant and insulating material • Easy to clean • built-in basin for humidity • suitable for all egg types • up to 24 chicken eggs
- electronic thermostat • temperature display can be read from the outside
- incl. manual egg turner, used to turn the eggs by 180° every hour
- optional motor for the automatic rotation of eggs not included • 230 Volt Operation

Made in Italy



Ref. no.	Colour	€
73051	yellow	

Ref. no.	Description	€
73053	Actuator for Egg Incubator	
73073	Thermometer for Egg Incubator	

Egg Incubator Covatutto 16 L

- suitable for all egg types
- up to 16 chicken eggs
- with electronic thermostat
- temperature display can be read from the outside
- three bulbs ensure even warming
- incl. manual egg turner
- external opening for water refilling
- tough and durable
- Easy to clean
- 230 Volt Operation

Made in Italy



Ref. no.	Colour	Height	Ø	€
73032	yellow	33 cm	31 cm	

Ref. no.	Description	€
73099-1	Incandescent light bulb	

Egg Incubator Covatutto 16L digital

- display with temperature display and setting, as well as memory functions • integrated motor for automation turning of eggs • three bulbs ensure even warming
- external opening for water refilling • suitable for all egg types • up to 16 chicken eggs • tough and durable • Easy to clean
- 230 Volt Operation

Made in Italy



Ideal for Beginners



Ref. no.	Colour	Height	Ø	€
73099	red	33 cm	31 cm	

Egg Incubator Covatutto 7

- suitable for all egg types
- up to 7 chicken eggs
- electronic thermostat
- temperature display can be read from the outside
- three bulbs ensure even warming
- tough and durable
- Easy to clean
- 230 Volt Operation

Made in Italy



Ref. no.	Colour	€
73122	yellow	

Heating Plate CosyHeat

for chicks

New product

NEW

After hatching, chicks have a high need for warmth and warm themselves under the plumage of the mother hen. Heat builds up under the feathers and the chicks enjoy the cosy temperature. The CosyHeat heating plate works in the same way. The chicks hatch under the plate and rest in the cosy warmth underneath. They can snuggle right up to the plate. The plate also radiates heat downwards, creating an accumulation of warmth. The temperature can be easily and continuously adapted to the heat needs of the chicks using a knob on the plate. An integrated thermostat ensures a constant temperature underneath the plate. It heats up until it reaches the required temperature and then maintains it. As the heating plate does not heat constantly, it is more energy efficient than conventional radiant heaters. With its height-adjustable legs, the heating plate is easy to adjust to the size of the chicks.

- for rearing chicks • suitable for various poultry breeds • also suitable for beginners and hobby farmers • height-adjustable legs • temperature is adjusted using the integrated knob • with thermostat • Insulation for targeted heat dissipation downwards • energy-saving and more efficient than conventional radiant heaters • safe 24 V operation • with power pack for connection to a 230 V power supply



Technical data	70420	70421
Voltage	24 V	24 V
Number of animals	25	50

Ref. no.	Heating output	Length	Width	€
70420	25 W	30 cm	30 cm	
70421	50 W	40 cm	50 cm	

Ref. no.	Description	Colour	Material	Length	Width	suitable for	€
70422	Protective Cover for Heating Plate CosyHeat	black	Polypropylene	30 cm	30 cm	70420	
70423	Protective Cover for Heating Plate CosyHeat	black	Polypropylene	40 cm	50 cm	70421	

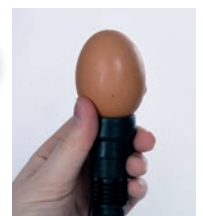
LED Candling Lamp

- you can follow the development of the embryos within the eggs using the candling (egg testing) lamp • two rubber caps for different egg sizes from 18 mm • practical and flexible to use • Battery included

New product

NEW

Technical data	73126
Voltage	1 x 1.5 V - AA (Mignon)



Ref. no.	Colour	Power	Length	Ø	Luminous flux	€
73126	black	3 W	12 cm	3,5 cm	150 lm	

Kerbl Infrared Heater

- Aluminium Screen ø 35 cm
- with 8 air vents
- Fastening chain (max. 20 kg load capacity)



Ref. no.	Power	Cable length	Plug type	MOQ	Pieces / unit	€
22729	250 W	5 m	with contoured plug	5 pieces	5 / box	

Ceramic Dark Radiator

- Infrared lamp with a special ceramic coating • only emits heat radiation in the non-visible infrared range (no light) • extremely long lifespan

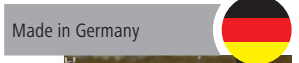


Ref. no.	Power	€
225284	60 W	NEW
225285	100 W	
225286	150 W	
225287	250 W	NEW

Infrared Heater

- Aluminium Screen ø 21 cm • with 6 air vents for better air circulation, extending the life of the infrared lamp • Fastening chain (max. 20 kg load capacity) • max. 175 W lighting source for equipment with economy switches!

22318: in individual cardboard packaging



Ref. no.	Cable length	Switch type	Plug type	MOQ	Pieces / unit	€
2228	2,5 m		with contoured plug	2 pieces	2 / box	
22281	2,5 m	with economy switch	with contoured plug	2 pieces	2 / box	
2229	5 m		with contoured plug	2 pieces	2 / box	
22318	5 m		with contoured plug			
22291	5 m	with economy switch	with contoured plug	2 pieces	2 / box	NEW



Ref. no.	Description	€
22296	Porcelain Mount for Protective Cage	

Kerbl Tempered Glass Infrared Lamp



Ref. no.	Colour	Power	€
22244	red	150 W	
22245	red	250 W	
22243	Clear	150 W	
22252	Clear	250 W	

Kerbl Infrared Energy-Saving Lamp

- robust design • excellent heat transfer

Save up to 30 % on your energy costs!



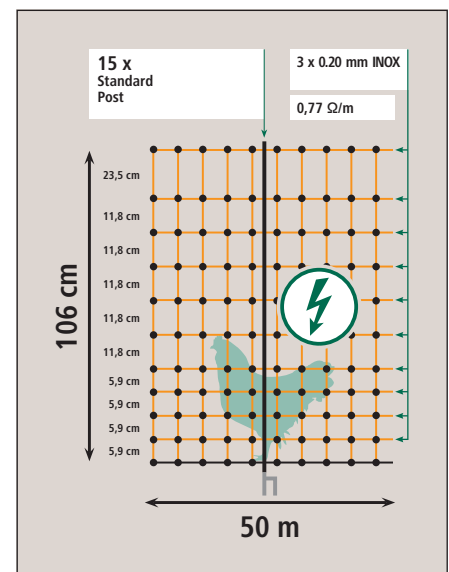
Ref. no.	Colour	Power	€
22246	red	100 W	
22247	red	175 W	



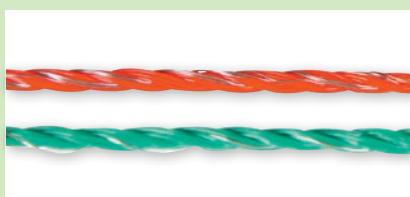
Poultry Netting

can be electrified

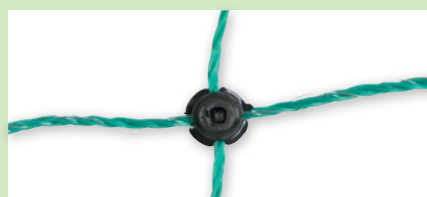
- for chickens, geese and turkeys
- extremely stable welded knots
- strengthened upper poly wire
- particularly small mesh width in the lower area of the net
- sturdy plastic posts with galvanized bottom tip
- also suitable for lambs
- we offer a 3-year warranty against UV damage for all plastic poly wires



3 year warranty of UV stability



All conductors = good conductivity via 3 x 0.20 mm stainless steel conductor



extremely stable welded knots



27249-5 Spare head insulator



27250-5 Replacement Floor Stopper

Ref. no.	Ground spike	Length	Height	Colour	Qty posts	Matching replacement post	€
292274	Double prong	15 m	106 cm	green	6	292281-5	
292273	Double prong	25 m	106 cm	green	9	292281-5	
292272	Double prong	50 m	106 cm	green	15	292281-5	
292270	Single prong	50 m	106 cm	orange	15	292282-7	NEW
292271	Double prong	50 m	106 cm	orange	15	292281-7	

Ref. no.	Description	Ground spike	Colour	Material	Post height	€
292281-7	Spare Post	Double prong	orange	Plastic	106 cm	
292281-5	Spare Post	Double prong	black	Plastic	106 cm	
27249-5	Head Insulator for Pasture Netting		black	Plastic		
27250-5	Base stopper for pasture netting		black	Plastic		
292282-7	Spare Post	Single prong	orange	Plastic	106 cm	



Poultry Netting

not electrifiable

- extremely stable welded knots
- strengthened upper poly wire
- particularly small mesh width in the lower area of the net
- sturdy plastic posts with galvanized bottom tip
- we offer a 3-year warranty against UV damage for all plastic poly wires
- also suitable for lambs

3 year warranty of UV stability



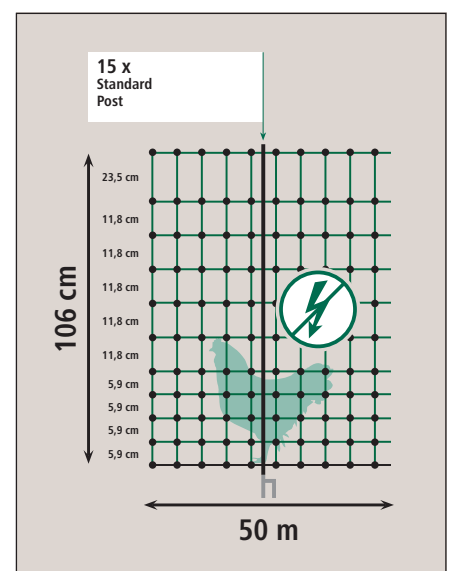
we recommend the use of electrifiable nets for turkeys and geese



extremely stable welded knots



Stainless Steel Connector Clip item no. 27299



Ref. no.	Ground spike	Length	Height	Colour	Qty posts	Matching replacement post	€
292279	Double prong	25 m	106 cm	green	8	292281-5	
292276	Single prong	50 m	106 cm	green	15	292282-5	
292278	Double prong	50 m	106 cm	green	15	292281-5	

Ref. no.	Description	Ground spike	Colour	Material	Post height	€
292282-5	Spare Post	Single prong	black	Plastic	106 cm	
292281-5	Spare Post	Double prong	black	Plastic	106 cm	
27249-5	Head Insulator for Pasture Netting		black	Plastic		
27250-5	Base stopper for pasture netting		black	Plastic		



Premium Poultry Net

Premium Poultry Nets - highest quality and optimised stability thanks to the new patented PREMIUM posts

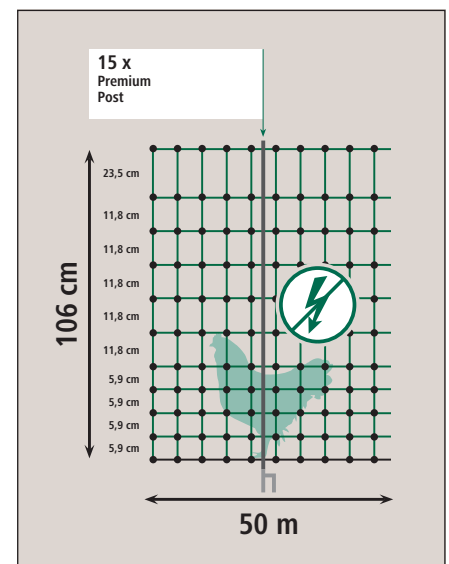
The 106 cm high poultry nets impress with proven quality and innovative new posts. The extremely robust and stable PREMIUM posts offer absolute stability and prevent the nets from sagging. The narrow mesh size in the lower part of the net makes these nets ideal for both chickens and lambs.

- height 106 cm (11 horizontal wires), cannot be electrified
- extremely robust and stable PREMIUM posts with galvanised ground tip (double prong)
- extremely stable welded knots
- particularly small mesh width in the lower area of the net
- the use of un-electrified nets is recommended especially in places where children are present or where no electrification is needed for guarding safety
- subtle colour combination blends well into the landscape or private gardens
- we offer a 3-year warranty against UV damage for all plastic poly wires

New product

NEW

3 year warranty of UV stability



Ref. no.	Ground spike	Length	Height	Colour	Qty posts	Matching replacement post	€
292419	Double prong	25 m	106 cm	green	8	292401	
292418	Double prong	50 m	106 cm	green	15	292401	

Ref. no.	Description	Ground spike	Colour	Material	Post height	€
27250-5	Base stopper for pasture netting		black	Plastic		
292401	Spare Post	Double prong	grey	thermoplastic + fibreglass	106 cm	

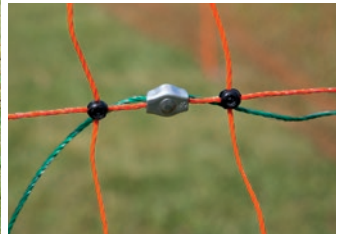
Poultry Netting



incl. underground cable



incl. connector accessories for optional electrification of the green net (the frame is insulated and can still be touched)



Door for electric fence nets

can be electrified

Enables quick and easy passage through fence netting. Practical door for your electric netting. Quick and easy to install. Can be installed to any position on the netting - can also be installed subsequently to a fence that has already be set up. The green netting of the door is electrifiable, the stable frame is insulated. When opening the door, the power does not have to be turned off.

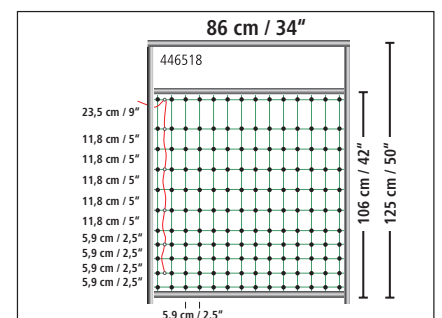
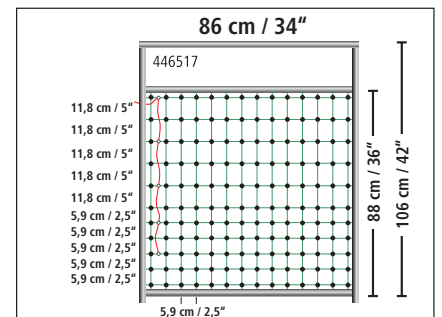
- fast and easy to open and close
- low weight, despite being sturdy and robust
- opening width: 86 cm (sufficient for most gardening equipment)
- incl. 2 jumbo standing posts, double-pointed
- electrifiable, incl. cable and connections
- quick and easy installation
- delivery includes connection and connection accessories

446517: suitable for all nets up to 106 cm in height

446518: extra-high version, suitable for a net height of over 95 cm up to 125 cm.



Ref. no.	Description	Width	Height	€
446517	for nets up to 106 cm	86 cm	106 cm	
446518	for nets from 95 - 125 cm	86 cm	125 cm	



Support Post for Field Netting

- ideally suited as supporting start and end posts, or for stabilising corners of pasture netting
- The post is simply pushed into the corners, and the net is thereby tensioned
- solid post made of galvanised round steel (ø 14 mm), with foot lug
- Post tapered at the bottom for easier penetration into the earth
- Jacketing with robust plastic tube (ø 20 mm) prevents power leakage (if electrifiable nets are used)



Utility model application registered!



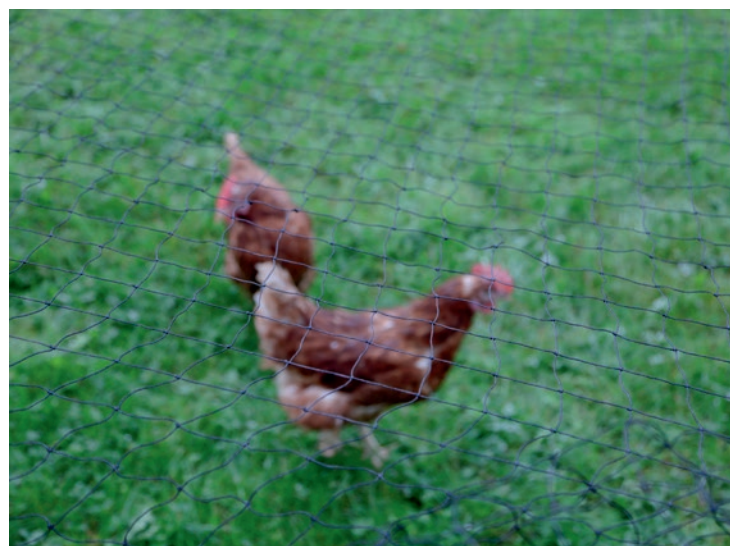
Ref. no.	Description	Total height	post ø	Length ground nail	MOQ	Pieces / unit	€
27340	up to a height of 90 cm	120 cm	14 mm	25 cm	4 pieces	4 / pack	
27350	from a height of 90 cm	145 cm	14 mm	25 cm	4 pieces	4 / pack	

Poultry protection net

- for covering chicken enclosures, aviaries, ponds, etc.
- ideal bird of prey protection
- weather-proof
- UV resistance
- good abrasion resistance
- flexible to use
- with edging
- Material: polyethylene

New product

NEW



Available from: May 2022

Ref. no.	Colour	Length	Width	Mesh size	Material thickness	€
73154	black	10 m	5 m	60 x 60 mm	1,25 mm	
73155	black	10 m	10 m	60 x 60 mm	1,25 mm	
73156	black	10 m	20 m	60 x 60 mm	1,25 mm	

Electric Fence 2021/22

Your Animal Experts



 **KERBL**

www.kerbl.com

Matching fence devices for electrifiable meshes can be found in our Kerbl Pasture catalogue

Automatic Chicken Door

The automatic control allows the flaps or sliders in poultry stalls to be automatically opened and closed. The automatic chicken door has various functions for opening and closing the slider:

- daylight-dependent control with light sensor
- time-dependent control, can differentiate between weekdays and weekends
- manual control on the unit or via connected switch
- 230 volt mains or battery operation (4 x AA mignon)
- Slider weight: min 0.5 kg, max. 2.5 kg
- max. lifting height: 60 cm
- 3-year warranty

Items 70545 and 70580 are suitable for commercial animal farming in accordance with TierschNutzTV (Animal Protection Keeping of Production Animals Order) (access openings min. 40 x 35 cm)

Safety features:

- A time delay on the light signal prevents unwanted opening during lightning or short-term brightness.
- If the slider encounters resistance by an animal when closing, the process is stopped and then continued.
- The device automatically switches off if there is a motor overload.

Included in item no. 70550: control with integrated motor and cable pull, power pack, 4 x AA mignon batteries, light sensor, 4 pulleys, user guide

included in the complete set (item no. 70545, 70546, 70547): as item no. 70550, plus sliding door with guide rails

Both battery and mains operation possible.
Solar battery kit (item no. 70556) and connector cables for car/electric fence battery (item no. 70557) available separately as accessories



3-year warranty



TV



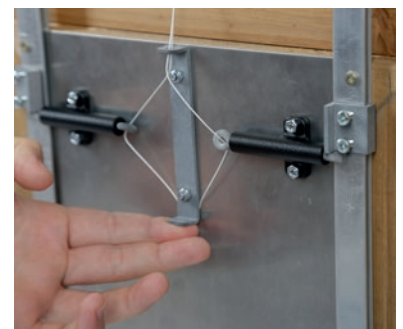
Ref. no.	Description	Size	€
70547	Complete Set incl. Sliding Door 220 x 330 mm	S	
70546	Complete Set incl. Sliding Door 300 x 400 mm	M	
70545	Complete Set incl. Sliding Door 430 x 400 mm	L	

Ref. no.	Description	Size	Material	Length	Width	Height	MOQ	Pieces / unit	€
70560	Sliding Door incl. Guide Rails	S	Aluminium		220 mm	330 mm			
70570	Sliding Door incl. Guide Rails	M	Aluminium		300 mm	400 mm			
70580	Sliding Door incl. Guide Rails	L	Aluminium		430 mm	400 mm			
70550	Automatic Control for Chicken Door		Plastic						
70551	Pulleys		Plastic				1 pouch	4 / pouch	
70554	Light sensor								
70553	Power pack								
70558	Extension Cable for Light Sensor			4 m					
70552	Replacement cord for Chicken Door								

Self-locking Mechanism for Sliding Door

No chance for foxes, raccoons etc.

- Retrofit Kit for Sliding Doors (item no. 70560, 70570, 70580)
- if the gate is not lifted via the cable pull, the bolts lock by means of spring force
- easy assembly thanks to slot-in system
- Complete set with all necessary screws
- Chicken door not included



Ref. no.	€
70559	

Connector Cable for Car/Electric Fence Battery

- compatible with all battery devices from Kerbl/AKO/Corral and standard car batteries
- with 2 A-fuses for overvoltage protection
- battery capacity of 1 Ah = 1,000 mAh represents a running time of about 1 year (without taking into account the typical self-discharge effects of battery storage)
- Barrel connector 5.5 x 2.1 mm



Technical data	70557
Voltage	12 V DC
Fuse	2 A
Cable length	3 m

Ref. no.	Length	€
70557	3 m	



Solar Battery Set for Automatic Chicken Door

Electricity. Life-long.

Make your automatic chicken door completely energy self-sufficient – no more battery changes

- just 7 days of sunshine per year are enough for trouble-free continuous operation
- Mounting kit included for various ways of installing the solar module
- a total of 5 m of cable for flexible installation
- an LED indicates when solar radiation is sufficient for the charging process
- suitable for outdoor use
- usable from version 1.3 of the automatic chicken door

Technical data	70556
Device voltage	8,5 V
capacity of device	800 mAh
Power solar module	10 W
Battery voltage	3,7 V
capacity of battery	2.200 mAh
Battery technology	LiPo
Weight	1,18 kg
Protection class	IP65



Ref. no.	Power solar module	Length	Width	Height	€
70556	10 W	34,7 cm	23,5 cm	1,7 cm	

Ultrasonic Animal Repeller SonicFlash

with integrated solar panel

The ultimate animal deterrent with intelligent ultrasound technology, PIR infrared sensor, solar module and flash!

- Animal defence and effective deterrence using ultrasound and flash
- Solar operated: flexible and mains-independent placement possible
- PIR motion sensor: only reacts to body heat, which means it is not activated by leaves, branches etc.
- large area of effect up to 70 m² with a range of 8 m and a detection range of 110 °
- switchable LED flashes also create potential deterrence, especially for birds
- 5 different ultrasonic frequencies set via rotary control to deter various animal species
- includes ground spike for easy outdoor installation
- Battery included

Included in delivery: 1 x ultrasound device, 1 x charging cable, 1 x ground spike, 3 x 1.2 volt AA, 1 x instruction manual

Technical data	299906
Battery quantity	3 x
Battery technology	NiMh
Battery capacity	800 mAh
Sound pressure level	120 dB
High frequency	14.000 - 26.000 Hz
Effective area	70 m ²
Motion sensor range	8 m
Scope	110 °
Housing material	Plastic

Ref. no.	€
299906	



Frequency settings		
0	Off	
1	13.5 kHz - 19.5 kHz	deters mice, rats, dogs, foxes, martens etc.
2	19.5 kHz - 24.5 kHz	deters cats, raccoons, badgers, skunks etc.
3	24.5 kHz - 45.5 kHz	deters bats, birds, rodents etc.
4	Alarm sound and LED flashes	deters wildlife
5	13.5 kHz - 45.5 kHz and LED flash	universal setting to deter all possible unwanted animals

ECO Plastic Pen Barney

- incl. 2 laying nests and two perches
- with sliding window for variable air circulation
- extended feet for better floor ventilation
- folding roof with fixing
- 2 doors that can be opened separately
- easy installation due to pre-drilled holes and threads
- incl. assembly instructions
- comes disassembled in cardboard box

Material properties:

- made from eco-friendly recycled material, 60 % plastic/40 % wood
- Waterproof • Odour-neutral • Maintenance-free • Good insulation • UV and weather-resistant (4 seasons) • Low flammability • Easy and quick to clean
- Firm, smooth and skin-friendly surfaces • Environmentally friendly manufacture • Cannot rot



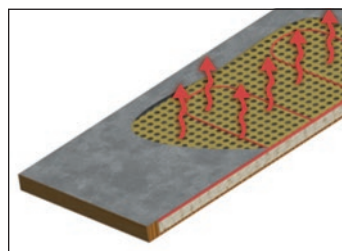
TV

Ref. no.	Dimensions	€
81731	137 x 73 x 83 cm	

Thermal Chicken Coop No Frost

heatable

- Temperature control through integrated thermostat (shift between approx. 6 and 13 degrees room temperature)
- heated coils integrated into the floor keep the interior frost-free
- with transformer for connection to a 230 V power supply
- safe 24 V operation
- double-wall construction with insulation (wall thickness 3.5 cm)
- Galvanised base surface for durability and easy cleaning
- also ideal for rearing
- incl. laying nest and three perches
- with sliding window for variable air circulation
- high-quality manufacturing with water-based glaze wood protection
- folding bitumen roof with stay mechanism
- incl. assembly instructions, easy assembly
- Supplied disassembled in 2 boxes



Floor heating section

Ref. no.	Colour	Dimensions	€
82844	brown / nature	146 x 74 x 82 cm	

Hen House

- exclusive hen house in a solid design
- high-quality grille
- 6 doors can be individually opened and locked
- Product dimensions without roof: 203 x 102.50 cm
- Base plastic coated
- 2 floors connected with stairs
- 2 sliding doors to the enclosure
- weather-proofed bitumen roof
- Accessories: 3 laying nests per floor, with access from outside, exit ramp, 2 wooden perches in the enclosure with plastic-coated excrement board
- Material: Wood glazed with protective wood colour
- incl. assembly instructions and DVD, easy installation with plug system
- Supplied disassembled in 3 boxes



TV

Ref. no.	Dimensions	€
82806	222 x 115 x 200 cm	



Chicken Coop Bonny

with metal frame on the base

- with sliding window for variable air circulation
- metal frame on ground protects against moisture and the deterioration of the wood
- increased safety due to an additional lock per door
- access between the outdoor pen and the resting place can be blocked off
- Resting place dimensions: 67 x 56 cm
- incl. 2 laying nests and 2 perches
- durable design
- 5 cm high retractable plastic basin makes cleaning easier
- weather-proofed bitumen roof
- Material: China Fir glazed with protective wood colour
- incl. assembly instructions, easy assembly
- comes disassembled in cardboard box



TV



Ref. no.	Dimensions	€
81713	181 x 65 x 118 cm	

Ref. no.	Description	€
81732	set of wheels	



Chicken Coop Florentina

- high-quality chicken coop in a stable design • extended feet for better floor ventilation • folding bitumen roof with stay mechanism
- incl. add-on with 2 laying nests and perches • with sliding window for variable air circulation • Material: China Fir glazed with protective wood colour • incl. assembly instructions, easy assembly • comes disassembled in cardboard box



Ref. no.	Dimensions	€
82827	146 x 74 x 80 cm	



Chicken Coop Emma

- with sliding window for variable air circulation • incl. elevated attachment with 2 laying nests and perches • side door suitable for Outdoor Enclosure 82825 • durable design • folding bitumen roof with stay mechanism • Material: China Fir glazed with protective wood colour • incl. assembly instructions, easy assembly • comes disassembled in cardboard box



Ref. no.	Colour	Dimensions	€
81702	nature	146 x 74 x 85 cm	

Small Animal Pen Fortuna

- incl. lower run and attached enclosure • weather-proofed bitumen roof with stay mechanism • with high-quality grille • high pull-out plastic tray makes cleaning easier • 4 doors that can be opened separately • simple assembly thanks to slot-in system • Material: China Fir glazed with protective wood colour • incl. assembly instructions • Supplied disassembled in 2 boxes



Ref. no.	Dimensions	Interior height	Gable height inside	€
82813	160 x 80 x 117 cm	54 cm	60 cm	

Laying Nest Fortuna

- consisting of attachment and seat bar • fits small animal pen 82813 • Material: Wood • incl. assembly instructions, easy assembly • comes disassembled in cardboard box

Ref. no.	Dimensions	€
82814	41 x 63 x 41 cm	



Small animal pen for rabbits or chickens

- weather-proofed bitumen roof • Opening roof with intermediate shelf for storage of small parts • extended feet for better floor ventilation • galvanised tub makes for easy cleaning • Outdoor enclosure (70345) can be added
- Conversion kit for use as a hen house also available (82808) • Material: Wood glazed with protective wood colour • incl. assembly instructions, easy assembly • comes disassembled in cardboard box

TV

Ref. no.	Dimensions	Interior height	€
82807	105 x 100 x 108 cm	61 cm	



Laying Nest

- consisting of attachment and seat bar • fits small animal pen 82807 • incl. assembly instructions, easy assembly • comes disassembled in cardboard box

TV

Ref. no.	Dimensions	€
82808	85 x 37 x 48 cm	



Duck and Goose Pen Duck Town

- weather-proofed bitumen roof • galvanised bath, can be pulled out at the side • incl. plastic feet to protect against moisture • with sliding window for variable air circulation • Material: China Fir glazed with protective wood colour • incl. assembly instructions, easy assembly • comes disassembled in cardboard box

Ref. no.	Dimensions	€
82809	93 x 73 x 67 cm	



Laying Nest

New product

NEW

- provides hens a clean environment for laying eggs
- ideal for spreading
- an optional nesting bowl is also available for litter-free use (73147)
- interior dividing wall splits the nest into two nesting sections
- with closeable inspection flap
- bottom ensures the easy removal of eggs
- egg tank with large capacity for 10 eggs per nesting compartment
- the perch makes it easier for the animals to enter
- entrance door can be closed with the help of the foldable perch
- sloping roof prevents the chickens from sitting on it
- Inner dimensions of nesting compartment (L x W x H): 35 x 25 x 48 cm
- also suitable for large and heavy breeds of chicken
- without back wall
- also suitable for hanging
- Material: Plastic



Item No. 73147

- recess-shaped nesting bowl offers maximum comfort during egg laying • eggs are guided gently towards the inspection flap

for commercial animal farming in accordance with TierschNutzTV
(Animal Protection Keeping of Production Animals Order)
(Minimum dimensions of laying nest: 35 x 25 cm)



73147



available from: Autumn 2022

Ref. no.	Description	Colour	Dimensions	€
73146	unpacked	brown	52 x 59 x 53 cm	
73146/1	in individual cardboard packaging	brown	52 x 59 x 53 cm	

Ref. no.	Description	Colour	Material	€
73147	Nesting Bowl	brown	Plastic	

Laying Nest Wood

- provides hens a clean environment for laying eggs
- ideal for spreading
- entrance door can be closed with the help of the foldable perch
- ventilation holes allow air circulation and prevent condensation inside
- roof opens for easy cleaning
- sloping roof prevents the chickens from sitting on it
- also suitable for hanging
- also suitable for heavier breeds of chicken up to 2 kg live weight
- Inner dimensions of nest: 30 x 29 cm
- Material: Wood
- comes disassembled in cardboard box

New product

NEW



available from: March 2022

Ref. no.	Description	Dimensions	€
73149	1 compartment	51 x 34 x 53 cm	

Laying Nest

- suitable for 10 hens
- ideal for spreading
- spreading bases can be removed for cleaning
- exceptionally simple installation without tools – elements are easily plugged together
- also suitable for heavier breeds of chicken up to 2 kg live weight
- complies with EU organic directives
- Material: Poplar Wood untreated
- incl. assembly instructions
- comes disassembled in cardboard box



TV

Ref. no.	Dimensions	€
73005	30 x 35 x 83 cm	

Nest Eggs

- for chickens
- for displaying the lying location and encouraging the propensity to lie down



Ref. no.	Description	Colour	MOQ	Pieces / unit	€
73002/2	Wood	white	1 blister pack	2 / blister pack	
73004	Clay	white			
73004/2	Clay	white	1 blister pack	2 / blister pack	



Laying nest for outdoor use

- provides hens a clean environment for laying eggs
- should be mounted on the henhouse from the outside
- allows egg removal without having to enter the chicken coop
- bottom ensures the easy removal of eggs
- with inspection flap
- for hanging up
- Material: Plastic
- unassembled



Ref. no.	Description	Colour	Dimensions	€
73144	1 compartment	dark green	37 x 44 x 49,5 cm	

Laying Nest

- provides hens a clean environment for laying eggs
- with inspection flap
- bottom ensures the easy removal of eggs
- also suitable for hanging
- Material: Plastic
- unassembled



Ref. no.	Description	Colour	Dimensions	€
72288	1 compartment	dark green	37 x 44 x 49,5 cm	

Laying Nest

- galvanised side parts and plastic bottom
- provides hens a clean environment for laying eggs
- with inspection flap
- bottom ensures the easy removal of eggs
- easy cleaning thanks to a removable base
- also suitable for hanging
- unassembled



Ref. no.	Description	Colour	Dimensions	€
73142	1 compartment	dark green	26 x 52 x 43,5 cm	
73134	2 compartments	dark green	53 x 52 x 43,5 cm	
73143	3 compartments	dark green	79 x 52 x 43,5 cm	

ŮKERBL
Pet



PET
2022/2023

You will find everything for your pet in our new
Kerbl pet catalogue

Everything you need to know about rabbits

Rabbits have a number of specific needs that you definitely need to know about to ensure your animals remain healthy and happy and feel comfortable with you.



No individual penning!

As rabbits are very sociable animals that live in groups in the wild, it is absolutely necessary to have two (or even better, several) animals. A single animal feels lonely and will become sick. Even a guinea pig cannot replace social contact with animals of its own kind! Female animals from the same litter usually get on best with each other. As incompatibilities may still occur, you should observe the animals very carefully at first. Male animals absolutely must be castrated, to avoid hierarchical fights on the one hand and to prevent unwanted offspring on the other.

Important: Sexual maturity can occur as early as the tenth week of life in small breeds!

Cage location:

Rabbits like it light and airy, but not too hot. The cage should therefore not be placed in direct sunlight or very close to a heater. Their ideal temperature is between 15 and 22 degrees. Rising cold and draughts are harmful and can make your rabbit sick. Rabbits are typical prey animals and are therefore skittish and tend to panic if someone leans over the cage from the top. The cage should therefore be placed at a minimum height of 60 cm. Although rabbits are social animals and can become very tame, disturbances and noise near the cage (e.g. people passing by) can be stressful for the animals. The cage should therefore be in a quiet place; no noise sources should be near the cage (e.g. hi-fi systems, TVs or noisy pets).

Cage facilities:

Space isn't everything! Rabbits need an entertaining cage environment with places to retreat into (boxes) and raised lying surfaces on which the animals like to stretch out and relax. Other hiding places (such as bridges) should also be offered which animals can explore and gnaw too. Your rabbits like lots of hutch litter so that they can at least partially bury themselves in it. Straw pellets, ear of corn granulates or wood shavings are ideal as hutch litter. Never use cat litter! A hay rack protects the feeding hay from getting dirty. For rabbits, only hay racks with a cover should be used since the animals may otherwise jump into the rack and injure themselves.

Space requirements!

Rabbits are very active animals that like to move around and which require plenty of space to feel happy in. The cage/hutch must therefore be as large as possible. For two dwarf rabbits (animals which, in adulthood, do not weigh more than around 2 kg), the largest cage/hutch available in the store should be chosen if possible. As an alternative, it is also possible to use a two-tier cage in which the floors are connected by a ramp. Stores also sell outdoor enclosures for indoors and out which can be affixed to the open cage or hutch doors. Larger animals must be given more space appropriate to their size. The cage/hutch must in any event be large enough for the animals to be able to stand up (on their hind legs) and use raised lying surfaces.

Rodent House Lucky

with metal frame on the base

- metal frame on ground protects against moisture and the deterioration of the wood
- with high-quality grille
- floors can be blocked off from each other
- 6 cm high retractable plastic basin, makes cleaning easier
- 4 doors that can be opened separately
- outdoor pens can be placed at both side parts
- tunnel to resting area
- easy assembly
- Material: Wood glazed with protective wood colour
- comes disassembled in cardboard box

New product

NEW



Ref. no.	Dimensions	Interior height	€
81722	115 x 65 x 100 cm	50 cm	

Rodent House Freetime Luke

with metal frame on the base

- metal frame on ground protects against moisture and the deterioration of the wood
- dense grille, especially suitable for young animals
- Access between the outdoor pen and the resting area can be blocked off
- The run is accessed by a ramp
- Grille edges covered with wood trim
- 6 cm high retractable plastic basin, makes cleaning easier
- Outdoor pen with separate door
- Window with Plastic Washer
- weather-proofed bitumen roof
- Material: Wood glazed with wood protecting paint (water-based)
- incl. assembly instructions, easy assembly
- comes disassembled in cardboard box

New product

NEW



Ref. no.	Dimensions	Interior height	Gable height inside	€
81726	127 x 62 x 98 cm	50 cm	62 cm	

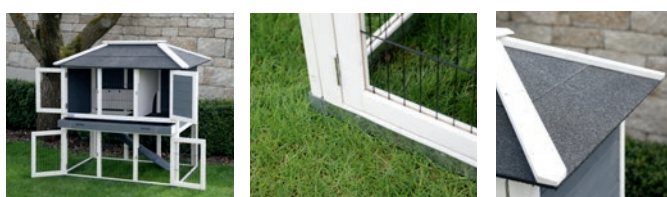
Rodent House Villa

with metal frame on the base

- metal frame on ground protects against moisture and the deterioration of the wood
- with modern hip roof
- with high-quality grille
- Access between the outdoor pen and the resting area can be blocked off
- The run is accessed by a ramp
- 6 cm high retractable plastic basin, makes cleaning easier
- 4 front doors that can be opened separately
- weather-proofed bitumen roof
- Material: Wood glazed with wood protecting paint (water-based)
- incl. assembly instructions, easy assembly
- comes disassembled in cardboard box

New product

NEW



Ref. no.	Dimensions	Interior height	€
81727	118 x 68 x 118 cm	52 cm	

ECO Plastic Pen Samy

- 2 doors that can be opened separately • tunnel to resting area • folding roof with fixing • 5 cm high retractable plastic basin makes cleaning easier
- easy installation due to pre-drilled holes and threads • incl. assembly instructions • comes disassembled in cardboard box

Material properties:

- made from eco-friendly recycled material, 60 % plastic/40 % wood • Waterproof • Odour-neutral • Maintenance-free • Good insulation • UV and weather-resistant (4 seasons) • Low flammability • Easy and quick to clean • Firm, smooth and skin-friendly surfaces • Environmentally friendly manufacture • Cannot rot

Ref. no.	Colour	Dimensions	Interior height	€
81730	white / grey	116 x 57 x 82 cm	50 cm	



TV

ECO Plastic Pen Samy XL

- 2 doors that can be opened separately • tunnel to resting area • folding roof with fixing • 5 cm high retractable plastic basin makes cleaning easier • easy installation due to pre-drilled holes and threads • incl. assembly instructions • comes disassembled in cardboard box

Material properties:

- made from eco-friendly recycled material, 60 % plastic/40 % wood • Waterproof • Odour-neutral • Maintenance-free • Good insulation • UV and weather-resistant (4 seasons) • Low flammability • Easy and quick to clean • Firm, smooth and skin-friendly surfaces • Environmentally friendly manufacture • Cannot rot

Ref. no.	Dimensions	Interior height	€
81729	116 x 73 x 92 cm	50 cm	



New product

NEW

Rodent House Tyrol Alpin

- in a stylish hut design • Sleeping area isolated on the lower floor and closed with sliding door • upper floor can be accessed via the built-in climbing aid • Balcony serves as a hay rack • 5 doors that can be opened separately • pull-out plastic tray makes cleaning easier • height-adjustable plastic feet • front with a high-quality mesh • weather-proofed bitumen roof with stay mechanism • Material: Wood glazed with protective wood colour • incl. assembly instructions, easy assembly thanks to slot-in system • Supplied disassembled in 2 boxes

Thermo



Ref. no.	Dimensions	Interior height	Gable height inside	€
82836	119 x 100 x 119 cm	40 cm	60 cm	

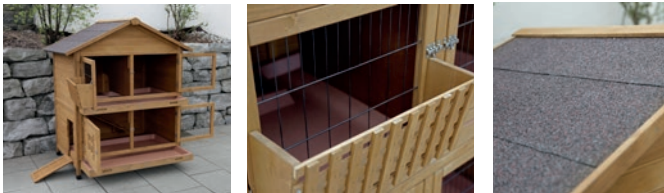


Rodent House Südtirol

- front with a high-quality mesh • extra-high gable area • Balcony serves as a hay rack • upper floor is accessed by a ramp • upper floor separated in the middle, the other area is accessible through a tunnel • 4 front doors that can be opened separately • additional side door (left) for outdoor access or for an outdoor enclosure (matching enclosures: 82825, 82823, 70345, 81712, 81708, 81720) • two 6 cm high removable plastic basins make cleaning easier • Window with Plastic Washer • weather-proofed bitumen roof • incl. height-adjustable plastic feet to protect against moisture • Material: Wood glazed with wood protecting paint (water-based) • incl. assembly instructions, easy assembly • Supplied disassembled in 2 boxes

New product

NEW



TV

Ref. no.	Dimensions	Interior height	Gable height inside	€
81725	125 x 87 x 142 cm	50 cm	76 cm	

Rodent House 4-Season Superior

with optional heated rest area

- new colour edition of previous model 82724
- heat-insulated rodent house
- double-wall construction with insulation (wall thickness 3.5 cm)
- stable grille – with retractable Plexiglas with vent holes for protection during the cold season
- 5 cm high retractable plastic basin makes cleaning easier
- 3 doors that can be opened separately
- Rest area accessed via ramp
- incl. bottle holder for standard water bottles (400 - 600 ml)
- height-adjustable plastic feet
- weather-proofed bitumen roof
- suitable for every season (4-Season)
- Hotplate 70239 optionally available for rest area
- Material: Wood glazed with wood protecting paint (water-based)
- incl. assembly instructions, easy assembly
- comes disassembled in cardboard box

New product

NEW



70239

Ref. no.	Dimensions	Interior height	Gable height inside	€
81724	130 x 66 x 110 cm	47 cm	67 cm	

Ref. no.	Description	Colour	Length	Width	Height	€
70239	Rubber heating plate for small animals and poultry	black	24 cm	24 cm	0,7 cm	

Cleaning cages and accessories

Rabbits are very clean animals and therefore only feel comfortable in a well maintained home!

Foul-smelling, damp bedding and dirty water feeders can also lead to illnesses.

Strong cleaning agents not only interfere with the rabbit's delicate sense of smell, but can also be corrosive to the animals' skin and mucous membranes.

This is why only water or suitable cage cleaning agents should be used to clean up.

To prolong the life of the pen, you should treat the wood with a suitable type of paint or varnish. The best place to position it is under a porch on the side away from the weather. When choosing the right pen size, check country-specific animal welfare standards!



Rodent House Appartement Flat

- floors can be blocked off from each other
- weather-proofed bitumen roof
- height-adjustable plastic feet
- with high-quality grille
- pull-out plastic tray makes cleaning easier
- 4 doors that can be opened separately
- tunnel to resting area
- with side door for free outlet
- additional raised areas on the floors
- can be added on to outdoor enclosure 81720 and 82845
- Material: Wood glazed with protective wood colour
- incl. assembly instructions, easy assembly
- comes disassembled in cardboard box



Ref. no.	Dimensions	Interior height	€
82835	115 x 61 x 118 cm	50 cm	



Rodent House Freetime

- with outlet
- access between the outdoor pen and the resting place can be blocked off
- weather-proofed bitumen roof
- Grille edges covered with wood trim
- pull-out plastic tray makes cleaning easier
- Material: Wood glazed with protective wood colour
- incl. assembly instructions, easy assembly
- comes disassembled in cardboard box



Ref. no.	Dimensions	Interior height	Gable height inside	€
82826	140 x 65 x 100 cm	45 cm	58 cm	



Outdoor Enclosure Appartement Pro

with metal frame on the base

- suitable for rodent pens 81717, 81718, 82835 and 81719 • metal frame on ground protects against moisture and the deterioration of the wood • additional large door facilitates access from outside • high-quality mesh provides stability • weatherproof plastic roof • increased safety due to a second lock per door • Material: Wood glazed with protective wood colour • incl. assembly instructions, easy assembly • comes disassembled in cardboard box



Ref. no.	Dimensions	€
81720	115 x 85 x 90 cm	

TV



Rodent House Appartement Pro

- weatherproof plastic roof • tunnel to resting area • with side door for free outlet • increased safety due to a second lock per door • 5 cm high removable plastic tub • floors can be blocked off from each other • additional plastic-coated levels for more freedom of movement • visually matching enclosure 81720 can be attached • incl. height-adjustable plastic feet to protect against moisture • front with a high-quality mesh • doors can be opened separately • Material: Wood glazed with protective wood colour • incl. assembly instructions, easy assembly • comes disassembled in cardboard box

TV

Ref. no.	Dimensions	Interior height	Gable height inside	€
81719	118 x 61 x 130 cm	50 cm	59 cm	



Rodent House Buddy

- 2 doors that can be opened separately • front with a high-quality mesh • tunnel to resting area • folding bitumen roof with stay mechanism • incl. plastic feet to protect against moisture • pull-out plastic tray makes cleaning easier • Material: Wood glazed with protective wood colour • incl. assembly instructions, easy assembly • comes disassembled in cardboard box

Ref. no.	Dimensions	Interior height	€
82726	116 x 52 x 82 cm	50 cm	



Rabbit Hutch XXL Vario

- with integrated, closable hay rack • 6 cm high retractable plastic basin, makes cleaning easier • with high-quality grille • 2 doors that can be opened separately • increased safety due to a second lock per door • with side door for free outlet • tunnel to resting area • with additional storage space • weatherproof, plastic fold-up roof with stay mechanism on main roof • height-adjustable plastic feet • Material: Wood glazed with protective wood colour • incl. assembly instructions, easy assembly • comes disassembled in cardboard box

Ref. no.	Dimensions	Interior height	€
81709	155 x 76 x 80 cm	60 cm	

TV



Check the distance between the bars for each animal before use.

To prolong the life of the wooden enclosure, you should treat the wood with a suitable type of paint or varnish.

Open-air enclosure with breakout barrier

- with high-quality, zinc-plated grille
- cover can be opened
- with side door
- cage cover prevents jumping out and offers optimal protection against uninvited guests, e.g. birds of prey, cats or martens
- Material: China Fir glazed with protective wood colour
- incl. assembly instructions, easy assembly
- comes disassembled in cardboard box



Ref. no.	Dimensions	€
81716	116 x 116 x 58 cm	

Open-air enclosure with breakout barrier

- sturdy plastic roof
- cage cover prevents jumping out and offers optimal protection against uninvited guests, e.g. birds of prey, cats or martens
- with high-quality, zinc-plated grille
- cage cover can be folded up
- with 2 side doors, resting area and viewing platform
- with steps to viewing platform
- Material: China Fir glazed with protective wood colour
- incl. assembly instructions, easy assembly
- comes disassembled in cardboard box



Ref. no.	Dimensions	Grille Spacing	€
81708	220 x 115 x 75 cm	2,5 cm	

TV

Outdoor Pen Vario

- with wire mesh
- consists of 6 elements and 5 ground spikes
- Adjustable set-up, 6-sided or 4-sided with roof
- comes disassembled in cardboard box



Ref. no.	Dimensions	€
84399	120 x 120 x 59 cm	



Check the distance between the bars for each animal before use.

TV



Open-air enclosure with breakout barrier

• with side door • easy to assemble with ground spikes • Material: metal galvanised • Safety Net with Sun Protection

Ref. no.	Dimensions	Grille Spacing	€
82823	115 x 115 x 65 cm	3 cm	

Ref. no.	Description	Colour	suitable for	€
83075	Sun Protection for Outdoor Enclosure	green / yellow	82823	



Outdoor Pen Easy

• for large rabbits and hares • with 2 doors • cage cover can be folded up • cage cover prevents jumping out and offers optimal protection against uninvited guests, e.g. birds of prey, cats or martens • easy to set up and move • incl. carrying handle and additional securing for the door locks • Material: metal galvanised • with sunscreen • incl. assembly instructions, easy assembly

Ref. no.	Dimensions	Grille Spacing	€
82845	115 x 115 x 60 cm	3,5 cm	



Open-air enclosure with breakout barrier

• perch • with 2 doors • easy to assemble with ground spikes • Material: metal galvanised • with sunscreen

Ref. no.	Dimensions	Grille Spacing	€
81712	180 x 90 x 75 cm	3 cm	

Ref. no.	Description	Colour	suitable for	€
81714	Sun Protection for Outdoor Enclosure	green	81712	



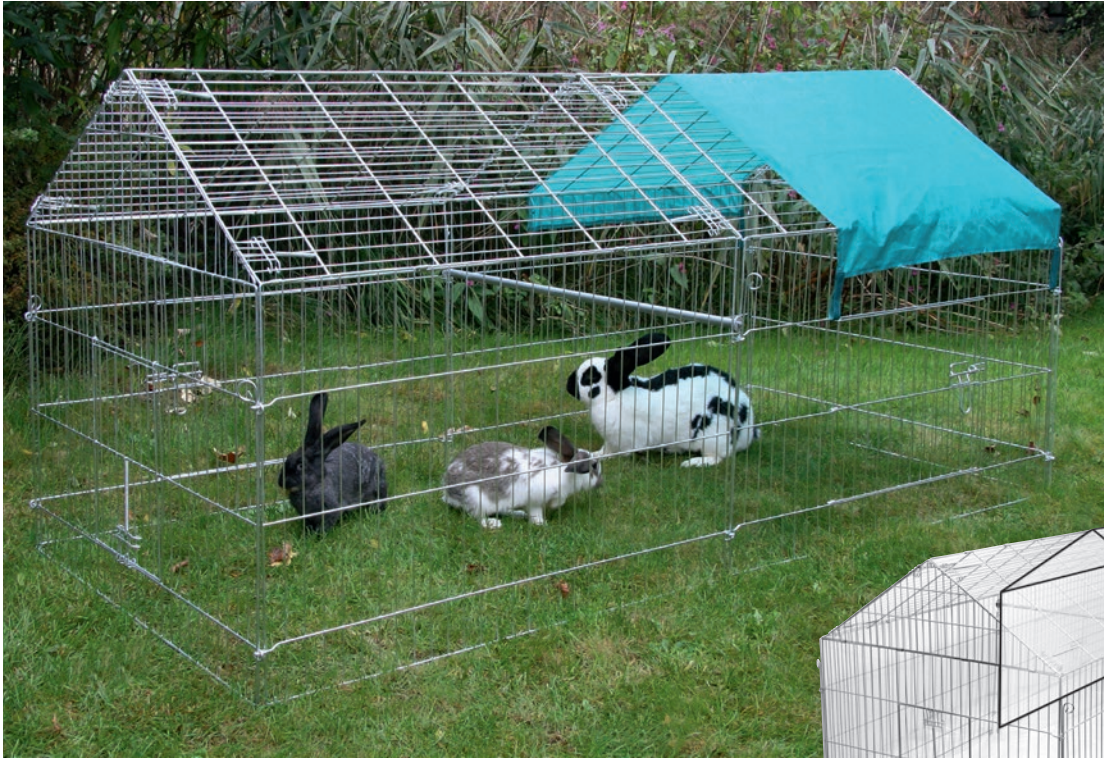
Young Animal Outdoor Pen with Breakout Barrier

• for large and small • extra small mesh in bottom area (35 x 18 mm) • cage cover prevents jumping out and offers optimal protection against uninvited guests, e.g. birds of prey, cats or martens • side door and additional small opening • opens at the top • easy to assemble with ground spikes • Material: metal galvanised • with sunscreen

Ref. no.	Dimensions	€
81701	144 x 112 x 60 cm	



Check the distance between the bars for each animal before use.



Outdoor Pen

- for large rabbits, hares and chickens • perch • easy to assemble with ground spikes • can be added on to small animal pen 82807 • with 3 doors
- Material: metal galvanised • with sunscreen

Check the distance between the bars for each animal before use.

Ref. no.	Dimensions	Grille Spacing	€
70345	220 x 103 x 103 cm	3,6 cm	

TV

Ref. no.	Description	Colour	suitable for	€
70342	Sun Protection for Outdoor Enclosure	green	70345, 82825, 83172, 82845, 81701	

Extension element

- fits 70345 • perch • easy connection to the outdoor enclosure with ground spikes • Material: metal galvanised

Ref. no.	Dimensions	Grille Spacing	€
70358	110 x 103 x 103 cm	3,6 cm	

Break-out guard

- 70341 : consists of 6 elements with 24 connectors and 6 U-hooks
- 70381 : consists of 2 elements with 8 connectors and 2 U-hooks



Ref. no.	Description	€
70341	Attachment set for 70345	
70381	Attachment set for 70358	



Open-air enclosure with breakout barrier

- with 4 side doors • cage cover can be folded up
- cage cover prevents jumping out and offers optimal protection against uninvited guests, e.g. birds of prey, cats or martens
- easy to assemble with ground spikes
- Material: metal galvanised • with sunscreen



Ref. no.	Dimensions	Grille Spacing	€
82825	230 x 115 x 70 cm	3 cm	



Extension Unit with Escape Lock

- can be added on to the side of 82825 • with connecting rod for added stability
- Material: metal galvanised

Check the distance between the bars for each animal before use.

Ref. no.	Dimensions	Grille Spacing	€
81711	230 x 76 x 70 cm	3 cm	



Outdoor Pen

- for large rabbits and hares • cage cover prevents jumping out and offers optimal protection against uninvited guests, e.g. birds of prey, cats or martens
- side door and additional small opening
- opens at the top • easy to assemble with ground spikes
- Material: metal galvanised • with sunscreen

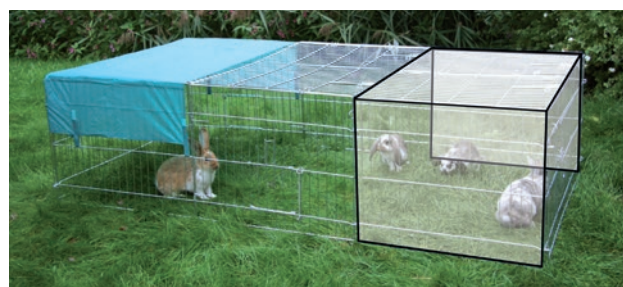
Ref. no.	Dimensions	Grille Spacing	€
83172	144 x 112 x 60 cm	3,5 cm	



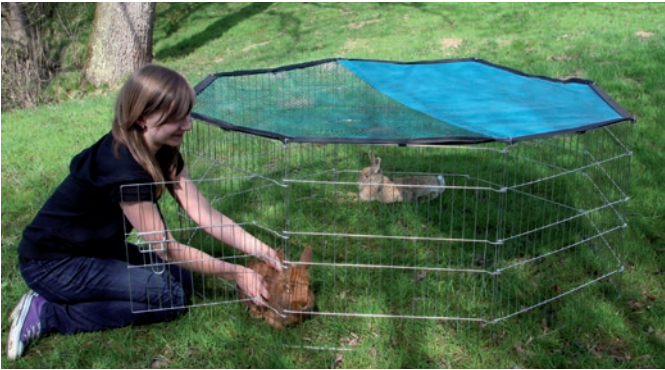
Extension element

- fits 83172 • easy connection to the outdoor enclosure with ground spikes
- Material: metal galvanised

Ref. no.	Dimensions	Grille Spacing	€
83173	72 x 112 x 60 cm	3,5 cm	



Check the distance between the bars for each animal before use.



Outdoor enclosure 8-corner

• 8 fence units, each 57 x 56 cm • with door • easy to assemble with ground spikes • can be extended with additional pens • Incl. safety net with sun protection • Material: metal galvanised

Ref. no.	Ø	Grille Spacing	€
82708	143 cm	2,8 cm	

Ref. no.	Description	€
82708-3	Spare Element with door	
82708-4	Spare Element without door	



Outdoor enclosure 6-corner

• 6 fence units, each 56.5 x 56.5 cm • with door • easy to assemble with ground spikes • Incl. safety net with sun protection • can be extended with additional pens • Material: metal galvanised

Ref. no.	Ø	Grille Spacing	€
82704	110 cm	2,8 cm	

Ref. no.	Description	€
82704-2	Spare Element with door	
82704-3	Spare Element without door	

Rabbit Netting

can be electrified

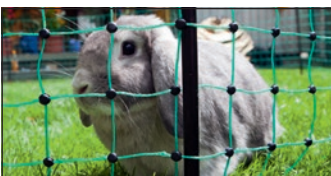
• Horizontal current conduction with 3 x 0.20 mm stainless steel conductors per poly wire • robust plastic posts with galvanised bottom tip • we offer a 3-year warranty against UV damage for all plastic poly wires



3 year warranty of UV stability



Top Seller



Extra small 5.9 cm meshing guarantees highest tending safety

Ref. no.	Ground spike	Length	Height	Colour	Qty posts	Matching replacement post	€
292209	Single prong	12 m	65 cm	green	9	292210-5	
292216	Single prong	25 m	65 cm	green	9	292210-5	
292221	Single prong	50 m	65 cm	green	15	292210-5	
292222	Double prong	50 m	65 cm	green	15	292211-5	



27249-5
Ersatz-Kopfisolator

Ref. no.	Description	Ground spike	Colour	Material	Post height	€
292210-5	Spare Post	Single prong	black	Plastic	65 cm	
292211-5	Spare Post	Double prong	black	Plastic	65 cm	
372005	Compact Power B 40		green / black			
27249-5	Head Insulator for Pasture Netting		black	Plastic		
27250-5	Base stopper for pasture netting		black	Plastic		
44657	Ground/Support Rod					



Feed Dispensers and Racks

Rabbit Feeder

- with perforated, rounded base and cover for dust-free feed
- can be mounted and filled from the outside
- Material: metal galvanised



74101

74102

Ref. no.	Capacity	Feed areas	€
74101	2200 ml	1	
74102	3000 ml	2	

Rabbit Feeder

- rodent-proof plastic body due to galvanised metal fittings
- with shut-off mechanism
- for hanging in cages
- incl. cover
- Material: Plastic

Made in Italy



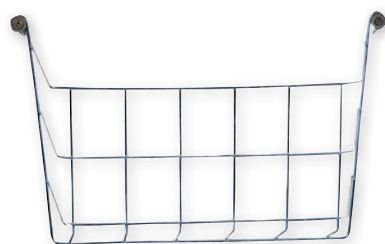
74104

74105

Ref. no.	Colour	Capacity	Feed areas	€
74104	red	2500 ml	1	
74105	red	3500 ml	2	

Rabbit Rack

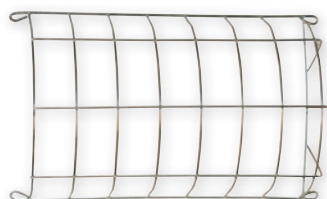
- for hay, grass or leaves
- Material: metal galvanised
- screw-on fastening



Ref. no.	Length	Width	Height	MOQ	Pieces / unit	€
74109	20 cm	10 cm	15 cm	5 pieces	5 / pack	
74110	25 cm	10 cm	15 cm	5 pieces	5 / pack	
74111	30 cm	10 cm	15 cm	5 pieces	5 / pack	

Door Close Rack

- for screwing in to the stable door
- Material: metal galvanised



Ref. no.	Length	Width	MOQ	Pieces / unit	€
74112	32 cm	19 cm	5 pieces	5 / pack	

Metal Hay Rack with Cover

- cover protects against contamination and injuries
- Material: metal galvanised
- for hanging



Ref. no.	Length	Width	Height	€
82857	17 cm	7 cm	13 cm	
82858	25 cm	9 cm	17 cm	

Troughs and Drinking Bowls

Stone Crock

- heavy duty design
- with hollow edge
- salt-glazed
- dishwasher proof

Ref. no.	Capacity	MOQ	Pieces / unit	€
74114	250 ml	6 pieces	6 / box	
74115	500 ml	6 pieces	6 / box	
74117	750 ml	6 pieces	6 / box	
74116	1000 ml	6 pieces	6 / box	



Salt lickstone with holder

- with valuable minerals
- with bracket
- suitable for any cage



Ref. no.	Weight	€
83189	50 g	
83190	80 g	

Lick stone made from rock crystal salt

- 100 % natural rock crystal salt
- contains key minerals and trace elements
- supports the immune system
- with bracket



*The rock crystal salt comes from a mountain range in Northern Pakistan

Ref. no.	Weight	Ø	€
82879	80 g	5 cm	



Mineral Lick

- with minerals and salts for healthy skin and strong bones
- provides natural tooth abrasion
- for all rodents
- includes wire holder



Ref. no.	Description	Weight	MOQ	Pieces / unit	€
83140	with vegetables	210 g	6 pieces	6 / display	
83170	without vegetables	210 g	6 pieces	6 / display	

Ceramic Bowl Double

- Material: Ceramic glazed
- dishwasher proof



Ref. no.	Capacity	MOQ	Pieces / unit	€
82785	350 ml / 450 ml	4 pieces	4 / box	

Troughs and Drinking Bowls

Small animal bowls NoFrost Superior 2.0

heatable

- bottle has double insulated wall technology
- keeps the water frost-free down to 20 degrees
- coordinated heating power distribution in the drinker and bottle area
- insulated base for optimal heat distribution
- 8 Watt heating element integrated into the bowl
- with power pack for connection to a 230 V power supply
- safe 24 V operation
- easy handling as the connecting cable can be separated from the drinker using a plug
- incl. wire mount for easy drinking bottle assembly and disassembly
- suitable for all conventional wire meshes
- Cable length: 1.5 m
- Material: Plastic
- includes operating instructions

easy to fill bottle with screw connection, no spilling of the water possible

Ref. no.	Colour	Capacity	€
82738	green	330 ml	

TV



Drinking bottle for rabbits

• Aluminium Screw Cap • Plastic Hanger • complete with aluminium tube • only available in display!

Ref. no.	Description	Capacity	MOQ	Pieces / unit	€
74120	Plastic	500 ml	8 pieces	8 / display	
74125	Glass	500 ml	8 pieces	8 / display	

Ref. no.	Description	€
74131	Aluminium Pipe for Drinking Bottle curved	
74132	Holder for Drinking Bottle	
74133	Plug for Drinking Bottle	
74134	Aluminium Screw cap for Drinking Bottle	



Bottle Classic de Luxe

- with double-ball technology
- incl. fastening wire
- only available in display!

TV

Ref. no.	Capacity	MOQ	Pieces / unit	€
83186	320 ml	12 pieces	12 / display	
83187	600 ml	12 pieces	12 / display	
84075	1100 ml	6 pieces	6 / display	



Special drinking bottle

- do not remove, simply refill • can be hung on the grille (min. width 14 mm) • current water level visible from the outside
- only available in display! • Material: Plastic

Ref. no.	Colour	Capacity	€
74163	brown	500 ml	
74160	brown	1.000 ml	

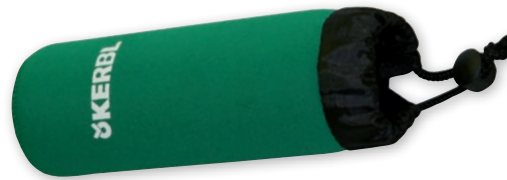
Ref. no.	Description	Colour	€
74161	Valve single without white plastic knee		
74164	Plastic Knee	white	



Thermal protective cover for drinking bottle

- with drawstring for optimal insulation • protects against sunlight, preventing algae formation • provides cooler water in hot weather • lowers the frost risk during the winter

82736: for 320 ml drinking bottles
82737: for 500 ml drinking bottles



Ref. no.	Colour	Length	Ø	€
82736	dark green	18 cm	5,5 cm	
82737	dark green	22 cm	6,5 cm	



Small animal bowls

- suitable for all wire meshes • especially stable support thanks to top hanging fitting and two spring mounts on the sides
- Water is replenished from above • only available in display! • Material: Plastic

Made in Italy

Ref. no.	Colour	Capacity	MOQ	Pieces / unit	€
74206	green	500 ml	12 pieces	12 / display	
74205	green	1000 ml	8 pieces	8 / display	



Rabbit Drinker

- with stainless steel drinking cup
- for hanging between two bars
- transparent plastic container for reading the water level from the outside
- Material: Plastic



Ref. no.	Colour	Capacity	€
74302	white transparent	2000 ml	

Bottle Holder

- galvanised with plastic bowl
- incl. bracket



Made in Italy

Ref. no.	Height	MOQ	Pieces / unit	€
74306	25,5 cm	1 pouch	2 / pouch	

Bottle Holder Niagara

- suitable for all bottles
- with safety edge
- Material: Plastic



Ref. no.	€
74145	

Hay Rack XL Nature

- Seat platform protects against contamination and injuries
- Material: Wood natural



Ref. no.	Length	Width	Height	€
82895	28 cm	20,5 cm	22 cm	

Small Animal House Outdoor

- as an addition to open-air enclosures
- suitable as a retreat from strong sunlight or wind
- folding bitumen roof with stay mechanism
- closable entrance/exit for transporting rodents
- Feet protect against ground moisture
- Plastic-coated base for easy cleaning
- Material: Wood glazed with protective wood colour
- comes disassembled in cardboard box
- incl. assembly instructions, easy assembly



Ref. no.	Dimensions	€
82740	36 x 36 x 40 cm	

Rodent House

- weather-proofed bitumen roof
- with two entrances for a species-appropriate environment
- suitable as a retreat from strong sunlight or wind
- Material: China Fir glazed with protective wood colour
- comes disassembled in cardboard box



Ref. no.	Dimensions	€
81773	59 x 39 x 30 cm	
82852	45 x 32 x 27 cm	

Llama and alpaca husbandry

"Anyone who says you can't touch happiness has never stroked an alpaca."

Llamas and alpacas are very social animals used to living in a herd. There are some points to note in order to meet their needs.

You primarily need plenty of space for your llamas and alpacas, preferably on a large pasture, as camelids need a particularly large amount of movement. Your fence should be 1.40 - 1.60 m in height. You should also secure your fence well at the base, so that none of your animals can slip under it.

A suitable shelter with hay is needed alongside the pasture. Llamas and alpacas are not sensitive to cold, therefore a stable that protects against wind, rain and sun is sufficient. It is important to have enough space for all the animals.

You can find suitable products in our Kerbl fencing catalogue.



Pasture

Stable



Care

Feed



Caring for these animals is relatively easy. It includes regular toenail cutting and once annual clipping. The nails should always be cut to be flush with the sole.

Llamas and alpacas are used to living in sparsely vegetated terrain so they make do with grass and hay. They also like to nibble on branches and tree trunks.

The cold winter months do not affect the animals as they are protected by their thick coats. You will find a selection of suitable water bowls on page 83 to 84 so that they have sufficient frost-free water available even in the winter.

Alpaca Halter

- size adjustable with buckles, making it suitable for all alpaca types more than a year old
- special construction prevents excessive pressure on the sensitive Alpaca nose even when leading
- with practical click fastener for quick opening and closing
- washable

Ref. no.	Colour	Material	can be used for	€
2799	black	Polypropylene	Alpaca	
27196	blue	Polypropylene	Alpaca	
27197	red	Polypropylene	Alpaca	



Lama Halter

- adjustable neck strap
- cross design also prevents excessive pressure on the sensitive lama snout during guiding
- extra robust design
- adjustable
- washable

Ref. no.	Colour	Halter size	Material	can be used for	€
27198	blue	50	Polypropylene	for lamas with medium-sized head and alpacas with large head	
27199	blue	60	Polypropylene	for lamas with large heads	



Western lead rope Ranger

- with double leather strap and Bull Snap
- stable lead rope with excellent grip made from woven PP

Ref. no.	Colour	Length	€
322694	black / white	4 m	



American Lead Rope

- durable knit with a sophisticated look
- made from tear-resistant nylon with large snap hook

Ref. no.	Colour	Length	€
3222147	black / grey	250 cm	



Lead Rope Dexter

- colour-matched to the Dexter halter
- lead rope with excellent grip properties made from woven, tear-resistant polypropylene
- thick design



Ref. no.	Fastener type	Colour	Length	Ø	€
323575	Snap-hook	blue	2 m	20 mm	
323579	Panic hook	blue	2 m	20 mm	
323577	Snap-hook	black	2 m	20 mm	
323581	Panic hook	black	2 m	20 mm	

Lunge line Softlonge

- soft mixed fabric for pleasant grip
- with large hand strap and rotating carabiner



Ref. no.	Colour	Length	€
3222119	brown / light blue	8 m	
321490	blue / violet	8 m	
321491	black / red	8 m	

Horse and Rider 2022

Your Animal Experts



www.kerbl.com

 **KERBL**

You can find further products suitable for llamas and alpacas in our horse catalogue or at www.kerbl.de

The joy of hearing happy bleating in your garden, the lovely feeling of running your fingers through thick wool, the desire for home-made cheese or hand-knitted sweaters, the practical benefits of a live and environmentally-friendly lawn mower – there are many reasons for keeping sheep as a hobby.

The lovable and intelligent four-legged friends always offer a relaxing counterpoint to everyday stresses and bring a touch of nature into our homes!



Neck Strap for Sheep

- Material: Nylon leather-reinforced
- with D-ring



Ref. no.	Colour	Length	Width	€
2718	yellow	60 cm	2,5 cm	
27188	red	60 cm	2,5 cm	

Collar with Oval Link

- with roller buckle • with oval link

12467: for sheep and goats

12463: for large sheep and rams



Ref. no.	Colour	Length	Width	€
12467	green / white	65 cm	4 cm	
12463	green / white	85 cm	4 cm	

Head Halter

- very sturdy design • adjustable



Ref. no.	Colour	Material	can be used for	€
2713	yellow	Polyamide	Sheep / Goats	

Sheep Marking Spray TopMarker

- for rapid sheep marking
- colourful and fast-drying marking, highest quality
- colour is easy to wash out of wool after shearing
- simple and effective identification



Ref. no.	Colour	Contents	€
27455	red	500 ml / Spray Can	
27457	blue	500 ml / Spray Can	

Lamb Bucket

- complete with retaining plate, teats and valves
- flattened on both sides
- with measuring scale
- food safe
- Material: Plastic
- with metal carry handle



Ref. no.	Description	Colour	Capacity	Watering places	€
271	with 6 natural rubber teats (item no. 274)	green	8 L	6	
276	with 5 red teats (item no. 277)	grey	8 L	5	

Ref. no.	Description	Colour	Material	MOQ	Pieces / unit	€
149	Screw Valve complete	grey	Plastic	10 pieces	10 / pack	
277	Teat	red	Natural rubber	20 pieces	20 / pack	
277/5	Teat	red	Natural rubber	1 blister pack	5 / blister pack	
2784	Teat	white	Natural rubber	20 pieces	20 / pack	
27111	Teat	beige	Natural rubber	20 pieces	20 / pack	
274	Teat	yellow	Natural rubber	6 pieces	6 / pack	
274/6	Teat	yellow	Natural rubber	1 blister pack	6 / blister pack	
275	valve for Teat 274		metal	6 pieces	6 / pouch	
275/6	valve for Teat 274		metal	1 blister pack	6 / blister pack	
1441	Cover for Feeding Bucket simply	grey	Plastic			
14211	Cover for Feeding Bucket simply	green	Plastic			
14272	Cover for Feeding Bucket MilkGuard	white transparent	Plastic			
1410	Mounting Bracket simply		metal galvanised	10 pieces	10 / pack	

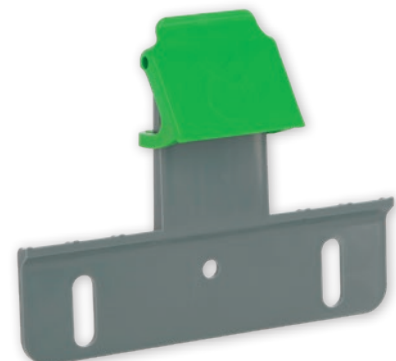
Catch Bucket Guard

The catch ensures that the animal cannot toss the feeding bucket out of the bucket holder. Also suitable for mounting on calf house fences.

- suitable for all feeding buckets

1406: Can be retrofitted to existing mounting brackets (item nos. 1408, 1410).

1407: the feeding bucket can be hung directly in it



Ref. no.	Description	Material	MOQ	Pieces / unit	€
1406	retrofittable	Plastic	1 pack	3 / pack	
1407	with bucket holder	Plastic	1 pack	3 / pack	

Lamb Bottle

- complete with teat
- with hanging tab on the bottle base
- with embossed measuring scale
- Material: Plastic



Ref. no.	Colour	Capacity	€
2780	white	1000 ml	

Ref. no.	Description	Colour	Material	MOQ	Pieces / unit	€
277	Teat	red	Natural rubber	20 pieces	20 / pack	
277/5	Teat	red	Natural rubber	1 blister pack	5 / blister pack	

Globigen Lamb Doser

Early days help for lambs and kids

- for a successful start in life • Supply of natural egg immunoglobulins during the first days of life • supports the immune system • supports intestinal health • Dispenser for quick and easy application in the first days of life



Supplementary feed for lambs and kids

Ref. no.	Contents	€
15991	250 ml / Bottle	

Blue Spray

Blue-tinting skin and hoof care spray for animals

- care and protection for highly stressed and sensitive body parts, e.g. ankle joints and interdigital areas • stimulates skin regeneration by promoting the formation of new skin cells • improves skin's moisture retention capacity. The skin (also scar tissue) becomes supple and elastic • no antibiotics • no waiting time • no documentation requirement • includes, among other thing, Dexpanthenol and natural oil of oregano (carvacrol), effective in skin care

Please note the use and safety instructions.



Ref. no.	Contents	€
15890	200 ml / Spray Can	
158900	400 ml / Spray Can	



Lamb Bottle Anti-Vac



- complete with teat
- special regulation of the flow rate
- wide spout for easy filling
- with printed measurement scale
- Material: Plastic



Ref. no.	Colour	Capacity	€
278	transparent	450 ml	

Ref. no.	Description	MOQ	Pieces / unit	€
279	Teat for 278			
279/2	Teat for 278	1 blister pack	2 / blister pack	

Paste Probiol®-L

Paste for the gut with natural immunoglobulins and vitamins for lambs

- Paste to increase vitality and stabilise the intestinal flora. • increases lamb vitality in three effective ways: • Strengthens the immune system • Stabilises natural intestinal flora • quickly available energy • contains valuable natural immunoglobulins from colostrum • safe dosage by administering with the help of an injector • allows for easy and economic administration to individual animals (especially for bottle-fed and multiple lambs) • the lambs are more stable and recover more quickly



Supplementary feed for short-term additional vitamin supply

Ref. no.	Contents	€
15758	6 x 20 ml	

Lamb Adoption Spray adOPT

- neutralises the natural odour of lamb and ewe
- prevents the instinctive rejection of adopted lambs by ewes
- scientifically advanced mixture of aromatic oils

Please note the use and safety instructions.

Ref. no.	Contents	€
27450	200 ml / Spray Can	



Sheep's hooves grow about 4-5 mm a month. Natural abrasion is not usually enough, and the hooves have to be trimmed. Use high-quality hoof pliers and blades. This makes the work easier and gentler for animals and owners.

hoofcare tincture ClauFit

- Acid-based cleaning and care solution
- nourishes and protects the natural acidic environment of claws and hooves
- for cattle and sheep hooves as well as horse hooves
- suitable in accordance with applicable European organic farming directive
- Listed in the supplies list for ecological agriculture in Germany.

Please note the use and safety instructions.

Ref. no.	Contents	€
2778	250 ml / Bottle	
2776	1000 ml / Bottle	



Green hoof care spray for cattle and sheep

- daily mouth care contributes to the health of the livestock at
- premium tea tree oil first good, high quality natural essences from aloe vera, oregano and marigolds, plus cod liver oil to penetrate deep into claws and protect them from harmful influences
- simply spray onto the cleaned and dried claw from a distance of 5-10 cm

with natural essences

Ref. no.	Contents	€
2779	400 ml / Spray Can	



Clipper

- for sheep
- robust design
- high-quality blades
- Material: metal painted



Ref. no.	Colour	Length	Toothing	MOQ	Pieces / unit	€
1639	green	26 cm	toothed on one side			
16391	green	26 cm	not serrated			
16391/1	green	26 cm	not serrated	1 blister pack	1 / blister pack	

Claw Knife Foldable Profi

- folding blade for professional claw care in sheep and goats
- with short blade made from high-quality German stainless steel
- extremely long service life of the material and excellent re-grinding properties
- single-phase professional finish
- water and grease-repellent noble wood with an ergonomic design



Ref. no.	MOQ	Pieces / unit	€
16818	1 blister pack	1 / blister pack	

Claw knife Profi

- for professional claw care in sheep and goats
- with twin-cut, short blade made from high-quality German stainless steel
- extremely long service life of the material and excellent re-grinding properties
- single-phase professional finish
- water and grease-repellent noble wood



Ref. no.	Cutting side	MOQ	Pieces / unit	€
16819	double-edged	1 blister pack	1 / blister pack	

Felco Clipper

- blade and anvil blade are easy to replace
- excellent cutting even with thick, dry hooves
- easy to clean thanks to Xylan coating
- gentle on hand muscles thanks to rubber pads and shock absorbers
- low-fatigue work thanks to ergonomic handles
- Material: metal

2757: the unique rotating handle on the model 50 prevents tendonitis, calluses and stiffening of the finger joints



Ref. no.	Description	€
2757	Felco 50 with revolving handle	
2758	Felco 51 Standard	

Sheep Shear

- Heart shape
- with quality-ground edges



Ref. no.	Length	Blade length	€
188	31 cm	16 cm	

Appropriate Care

Appropriate care is essential for sheep's health.

In addition to clean, good feed, sufficient drinking water, enough room to move, appropriate care and proper pen temperature, this also includes regular body care. Sheep shearing should be done twice a year. Use powerful shearing machines such as the constanta4 from Kerbl.

Ensure that you only use properly sharp shearing blades. Shearing is then much easier and the animals are less stressed. Freshly shorn sheep react more sensitively to cold and intense sunlight. When keeping them in this way, you should take special care in the days after shearing.



Sheep Shearing Machine constanta4

- the tried-and-tested motor technology gives the constanta4 tremendous tractive power
- even on matted and dirt-encrusted animals the constanta4 does not „yield“
- the blades glide through thickest wool without loss of performance
- special ventilation system with newly developed fan and new air duct produces substantially improved ventilation dynamics
- air filter can be replaced without tools
- Easy-to-service housing with ergonomic grip area for fatigue-free working
- Clipper blades made from tool steel with a special HRC hardening process have excellent durability with improved grinding properties and first-class cutting capacity

Made in Germany



Included in delivery: 1 x sheep clippers constanta4, 1 x clipper blade set, 1 x small oil bottle, 1 x screwdriver, 1 x Durable plastic case

Technical data

Voltage	230 V AC
Mains frequency	50 - 60 Hz
Stroke rate	approx. 2.400 strokes/min
Sound pressure level	87 dB
Cable length	3 m
Dimensions	35,5 x 8 x 10,8 cm
Weight	1.468 g without cable
Protection class	II

Ref. no.	Colour	Teeth lower/upper blade	Shearing type	€
18993	green	13 / 4	Sheep Shearing, very dirty animals	

Sheep Shearing Machine FarmClipper Profi

Powerful shearing machine with steplessly adjustable speed. At maximum power, the FarmClipper reaches 350 Watt and 2400 rpm. The customisable setting options for each animal and its coat conditions mean a perfect shear every time. Thanks to the fitting of premium blades, the FarmClipper produces an extremely clean and even shearing pattern. The blades glide precisely through the coat, and even heavily soiled animals are shorn professionally, leaving behind no residual hair. The FarmClipper is also an ergonomic dream. The balanced centre of gravity ensures the continuous shearing of multiple animals without the shearer getting tired. The rubberised insert in the upper part of the housing ensures a safe and non-slip grip. As a result, the FarmClipper lies perfectly in the hand and its powerful motor means it can be used for long periods of time to produce professional shearing results.



6-speed

Technical data	
Voltage	220 - 240 V
Mains frequency	50 Hz
Power	350 W
Stroke rate	approx. 2.400 strokes/min
Sound pressure level	87 dB
Cable length	5,5 m
Dimensions	33 x 7,8 x 9,7 cm
Weight	1.490 g without cable
Protection class	II

Included in delivery: 1 x sheep clippers FarmClipper Profi, 1 x clipper blade set, 1 x small oil bottle, 1 x screwdriver, 1 x Durable plastic case



Ref. no.	Colour	Teeth lower/upper blade	Shearing type	€
18261	red / black	13 / 4	very dirty animals, Sheep Shearing	

Ref. no.	Description	Lower blade teeth	Upper blade teeth	MOQ	Pieces / unit	€
18140	Shearing blades Wellington Upper blade		4	1 blister pack	1 / blister pack	
18141	Shearing blades Wellington Bottom blade	13		1 blister pack	1 / blister pack	
18142	Shearing blades Wellington (upper blade 18140 + lower blade 18141)	13	4	1 blister pack	1 / blister pack	

FarmClipper for Sheep Akku2

CLIPSTER

- The perfect supplement to the FarmClipper range – the battery-operated sheep shearing machine with a powerful 14.4 Volts
- anywhere cable operation is not possible and for special applications for sheep and/or cattle shearing under extreme conditions
- due to the high power reserves of the 14.4 V battery with 2500 mAh, the FarmClipper Akku2 can shear for up to 90 minutes • the second battery included in the supplied package ensures uninterrupted shearing operation • the next generation, lithium ion batteries provide reliable performance without losses or memory effect • the sleek shape and the balanced weight ensures fatigue-free operation

Technical data	
Voltage	14,4 V
Stroke rate	approx. 2.300 strokes/min
Battery technology	Li-Ion
Battery capacity	2.500 mAh
Battery run time	90 min
Battery charge time	90 min
Dimensions	28,5 x 8 x 8 cm
Weight	1.090 kg incl. battery and clipping head

Included in delivery: 1 x clipper FarmClipper Akku2, 1 x charging station, 2 x batteries 14.4 Volt, 1 x screwdriver, 1 x special oil, 1 x sturdy case



incl. replacement battery

Ref. no.	Description	Colour	Teeth lower/upper blade	€
18262	incl. 2 batteries and clipper blade set	dark blue	13 / 4	

Ref. no.	Description	Lower blade teeth	Upper blade teeth	€
18142	Shearing blades Wellington (upper blade 18140 + lower blade 18141)	13	4	

Clipper Oil

- guarantees optimum lubrication of all moving parts in the clipper head
- also ideal for all popular clipper brands



Ref. no.	Contents	€
1850488	100 ml / Bottle	
1850489	500 ml / Bottle	

Scratch Brush

- ensures ideal fur cleaning and care
- head and throat in particular can be cleaned
- suitable for cattle and calves, horses, goats etc.
- various mounting options (walls, corners, stables, posts)
- Bristle material: Polyamide
- Bristle length: 5 cm



Made in Germany



TV

Ref. no.	Colour	Width	Depth	Height	€
293100	red / blue	22 cm	9 cm	50 cm	

Scratch Mat

- made from natural rubber material
- mobile and soft nubs provide optimum coat care without risk of skin irritation
- rectangular shape with many mounting holes for stable mounting
- multi-functional applications such as flat on the wall or around pillars, posts or corners



Ref. no.	Colour	Length	Width	€
32678	black	40 cm	30 cm	
32689	black	60 cm	40 cm	

Drinking Bowls, Troughs and Racks

Long feeding trough with float valve

Simple water supply for your animals without any installation work. Connect the hose - and that's it!

- float valve can be used on both sides of the trough
- pipe piece and cover made from stainless steel
- inc. click coupling for garden hose
- for hanging
- Material: Plastic



Technical data	
Connection option	via bracket feed

Ref. no.	Colour	Water connection	Capacity	€
223111	green	1/2"	42 L	

Ref. no.	Description	€
223113	Floating valve	

Float Bowl S190

- 1/2" connection for high pressure float valve (22192)
- float cover made of stainless steel
- Supplies with float valve
- Material: powder-coated cast iron



Technical data	
Dimensions (W x D x H)	22 x 26 x 15,5 cm
Flow rate	5 L/min at 3 bar

Ref. no.	Colour	Water connection	Capacity	€
22190	green	G 1/2"	2 L	

Ref. no.	Description	Material	€
22192	Floating valve High pressure		
221971	Guard Size 2	metal hot-dip galvanised	

Float Bowl S522

- low-priced float bowl made of polypropylene
- with outlet plug for easy cleaning



Technical data	
Dimensions (W x D x H)	25,5 x 29 x 14,5 cm
Connection option	from left or right
Flow rate	6,5 L/min at 3 bar

Ref. no.	Colour	Water connection	Capacity	€
22522	green	G 1/2"	3 L	

Ref. no.	Description	Material	€
22523	Floating valve		
22524	Drain Plug		
221971	Guard Size 2	metal hot-dip galvanised	

Water trough

- stackable
- stable and inexpensive water troughs for outdoor use
- with edge for optimal stability
- a Suspended Float Valve 222905 can be retrofitted
- lightweight and simple to set up
- Material: Plastic UV-stabilised



Ref. no.	Description	Colour	Length	Width	Height	Capacity	€
223518	without drain plug	dark green	102 cm	72 cm	38 cm	150 L	
223517	with drain plug	dark green	130 cm	81 cm	63 cm	380 L	

Ref. no.	Description	Material	€
222905	Immersion Float Valve	stainless steel	
16601	Outlet for Footbath / Water Trough	Plastic	

Drinking Bowls, Troughs and Racks

Float Bowl S30

- water bowl made from high-quality plastic • with valve type 22182 also suitable for connection to low pressure • valve cover with snap hook for rapid access • suitable for high and low pressure • for wall and pipe mounting • with drain plug



Technical data	
Dimensions (W x D x H)	29,4 x 34 x 16,1 cm
Connection option	from left or right
Flow rate	6,5 L/min at 3 bar
Weight	2,3 kg

Ref. no.	Colour	Water connection	Capacity	€
222070	green	G 1/2"	5 L	

Ref. no.	Description	Material	€
222019	Pipe Mounting Brackets, in pairs	metal powder-coated	
22192	Floating valve High pressure		
22182	Floating valve Low pressure		
221973	Guard Size 3	metal hot-dip galvanised	



Float Water Bowl Heatable SH30

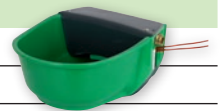
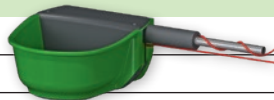
- drinking bowl made from high-quality plastic with integrated heating cable • integrated frost protection thermostat (switch-on temperature approx. +3 °C, switch-off temperature approx. +13 °C) • heating cable easy to replace • suitable for circulating heating systems • valve cover with snap hook for rapid access • with valve type 22182 also suitable for connection to low pressure • with outlet plug for easy cleaning • for wall and pipe mounting



frost-protected down to approx. -15 °C

Technical data	
Connection option	from left or right
Flow rate	6 L/min at 3 bar
Weight	2,7 kg

4 variants	with auxiliary pipe heating, 73 W	without auxiliary pipe heating, 31 W
24 V	222065	222063
230 V	222064	222062



Ref. no.	Colour	Pipe Heating	Heating output	Voltage	Water connection	Capacity	€
222062	green	without pipe heating	31 W	230 V	G 1/2"	5 L	
222063	green	without pipe heating	31 W	24 V	G 1/2"	5 L	
222064	green	with auxiliary pipe heating	73 W	230 V	G 1/2"	5 L	
222065	green	with auxiliary pipe heating	73 W	24 V	G 1/2"	5 L	

Ref. no.	Description	Material	€
222019	Pipe Mounting Brackets, in pairs	metal powder-coated	
22192	Floating valve High pressure		
22182	Floating valve Low pressure		
221973	Guard Size 3	metal hot-dip galvanised	

NEW

Drinking Bowls, Troughs and Racks

Feed Trough Long with Feeding Grill

- with feeding grill for controlled feed intake • particularly stable and hard-wearing plastic • fits plug trays and nearly every device of up to 50 mm size • Dimensions: D 21 cm (14.5 cm without mounting bracket) • especially suitable for goats and sheep • for hanging



Ref. no.	Colour	Length	Depth	Height	Capacity	€
323492	black	95,5 cm	21 cm	12 cm	9 L	

Feed Trough Long

for hanging

- especially stable with glass fibre reinforced plastic • extra-strong loops • fits plug trays and nearly every device of up to 50 mm size • Dimensions: Depth 35 cm (28 cm without mounting bracket) • for hanging



Ref. no.	Colour	Width	Depth	Height	Capacity	€
3268	green	100 cm	35 cm	24 cm	42 L	

Ref. no.	Description	Material	Length	Width	Height	€
14526	Trough Holder for Long Feed Trough	metal galvanised	82 cm	13,5 cm	18 cm	

Calf and Sheep Trough

- ideal for feeding during the drinking period



Made in the EU



Ref. no.	Width	Depth	Height	Capacity	€
3257	23 cm	22 cm	21 cm	6 L	

Tyre Trough

- high-quality sturdy feeding trough made from polyethylene • ideal for feeding horses in large and/or open stables • for proper feeding, as horses can feed in a natural stance • suitable for tyres 175/14 or larger



Made in the EU



Ref. no.	Colour	Height	Ø	Interior diameter	Capacity	€
324826	green	19,5 cm	51 cm	35 cm	15 L	

Hay Rack

- for 5 calves • Material: metal hot-dip galvanised
- for wall mounting



Ref. no.	Length	Width	Height	Rod distance	Bar thickness	€
14376	185 cm	40 cm	48 cm	80 mm	8 mm	

Drinking Bowls, Troughs and Racks

Double Hay Rack

- for mounting on boxes or sides up to max. 43 mm width • Material: metal galvanised

Ref. no.	Length	Width	Height	Rod distance	Bar thickness	€
32704	62,5 cm	51 cm	48 cm	40 mm	6 mm	
3232	53 cm	44 cm	48 cm	20 mm	6 mm	
32702	61,5 cm	50 cm	48 cm	80 mm	8 mm	



Hay Rack

- heavy-duty design • Material: metal galvanised
- for wall mounting



Ref. no.	Description	Length	Width	Height	Rod distance	Bar thickness	€
3230	small model	56 cm	29,5 cm	23 cm	80 mm	10 mm	
3231	large model	75,3 cm	47,5 cm	46,5 cm	85 mm	10 mm	

Fodder rack

- for sheep, goats, deer or calves
- for small bales and loose hay
- with concentrated feed trough
- Material: metal hot-dip galvanised
- Comes disassembled



291345



291298



291293

Price on request.

Ref. no.	Description	Length	Width	Height	Rod distance	€
291298	with roof	300 cm	130 cm	195 cm	70 mm	
291293	without roof	250 cm	88 cm	123 cm	70 mm	
291345	without roof	112,5 cm	68,5 cm	116 cm	78 mm	

Drinking Bowls, Troughs and Racks

Hay Bell for Round Bales

• for round bales with max. \varnothing 160 x H 125 cm or \varnothing 130 x H 135 cm • shatter-proof, frost-proof plastic material with built-in UV protection • sturdy construction • with animal-friendly and non-damaging food openings • water-removing rain channels over the food openings • with integrated carrying handle, suitable for front loader forks • with integrated fixing eyelets for fixing the base to the hay bell • base (available separately) for dry storage of the bales – can be locked for transportation with the hay bell



14558



14559

Technical data	14558
Height	164 cm
Exterior diameter	185 cm
Interior diameter	160 cm
Feed areas	10

Ref. no.	Colour	Suitable for	€
14558	olive green	Sheep / Goats / Calves / Ponies	

Please note separate freight costs.

Ref. no.	Description	Colour	Material	suitable for	€
14559	Base for Hay Bell	olive green	Plastic UV-stabilised	14557, 14558	
14556	Floor Anchor for Hay Bell and Base			14557, 14558, 14559	



Large house with connector set

with connector set for plug trays

- suitable as a mobile shelter for sheep
- one-piece hut made of fibreglass mat laminate, which guarantees uniform wall thickness and maximum stability, even with significant temperature fluctuations
- the built-in UV protection ensures pleasant temperatures in the hut in direct sunlight
- healthy climate thanks to improved air circulation as a result of the increased roof slope
- with sliding window on the rear of the hut
- including 2 eyebolts on the hut roof ridge for lifting and transporting
- incl. connector set with screw sets, hinges and connecting rods for easy connection of plug trays (ref. 442600-442605)
- plug tray fencing can be extended as desired
- Portable pens not included



Accessories:

- 3268 Long feed trough 42 l
- 323492 Long feed trough with feeding grille 8 l
- 14454 Hay rack
- 32702 Hay rack double



Technical data	27103
House material	Plastic fibre-glass reinforced
External hut dimensions	238 x 223 x 180 cm
Fencing dimensions	220 x 205 x 115 cm

Ref. no.	Description	€
27103	Large house with connector set	

Please note separate freight costs.

Ref. no.	Description	Material	Length	Width	Height	Weight	€
14518	CalfHouse Premium XL single	GFK	238 cm	223 cm	189 cm	104 kg	

Sheep Hurdle

- practical connecting system for easy and tool-free installation of hoardings
- suitable for the creation of pre-gathering spaces, pens, individual and group boxes or stall dividers
- 7 cross tubes with increasing spacing from bottom to top, tube diameter: 25.0 or 21.3 mm

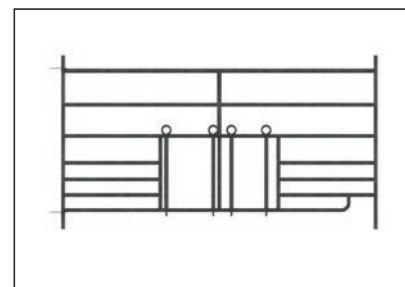
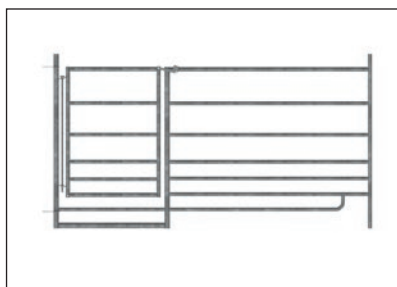
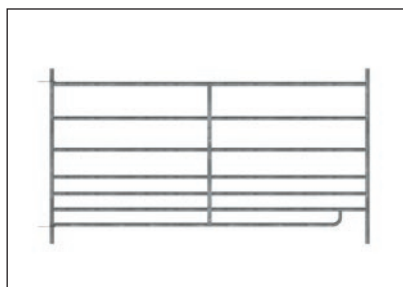
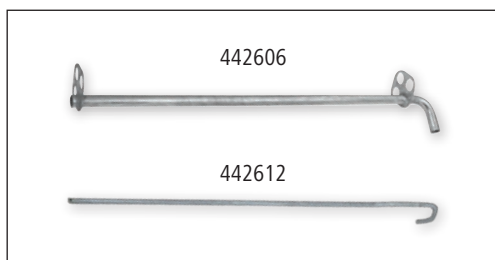
442603: door with lock latch and reinforced frame, width of 57 cm

442604: door with lock latch and reinforced frame, width of 57 cm

442611 : with two centrally located lamb slips with adjustable slip width (17.5 cm / 24.5 cm)



Extra strong connecting plates (5 mm)



Please note separate freight costs.

Ref. no.	Description	Material	Width	Height	€
442600	Sheep Hurdle	metal hot-dip galvanised	137 cm	92 cm	
442601	Sheep Hurdle	metal hot-dip galvanised	183 cm	92 cm	
442602	Sheep Hurdle	metal hot-dip galvanised	275 cm	92 cm	
442603	Sheep Hurdle with door	metal hot-dip galvanised	183 cm	92 cm	
442604	Sheep Hurdle with door	metal hot-dip galvanised	275 cm	92 cm	
442611	Sheep Hurdle with 2 lamb slips	metal hot-dip galvanised	183 cm	92 cm	

Ref. no.	Description	Material	Length	Width	Height	Ø	€
442606	Spare Strut for connecting hoardings with shafts	metal galvanised			92 cm		
442607	Bucket Holder	metal galvanised				30 cm	
32702	Double Hay Rack	metal galvanised	61,5 cm	50 cm	48 cm		
32704	Double Hay Rack	metal galvanised	62,5 cm	51 cm	48 cm		
442612	Connecting Rod for Plug Trays	metal galvanised			95 cm		

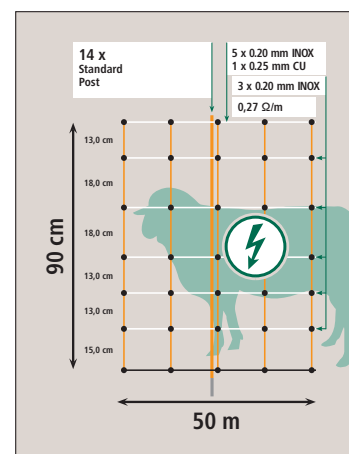
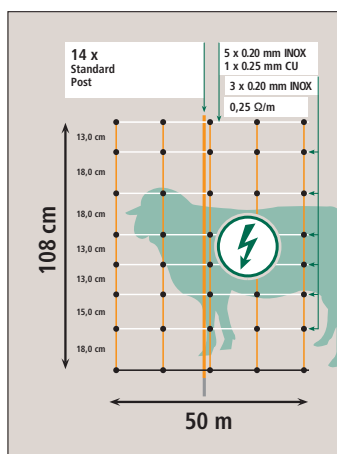




Sheep Netting

- height 90 cm (7 horizontal poly wires) or 108 cm (8 horizontal poly wires), each available with single or double prong
- sturdy plastic posts with galvanized bottom tip
- Horizontal current conduction with 3 x 0.20 mm stainless steel conductors per poly wire
- strengthened, energized upper poly wire - increased conductivity thanks to the use of 5 stainless steel wires and a tin-plated copper wire
- extremely stable welded knots
- with practical stainless steel clip for easy connection of multiple nets
- head insulator and ground stopper make self-loosening of the poly wire virtually impossible
- we offer a 3-year warranty against UV damage for all plastic poly wires
- high quality at a good price
- improved nodes for higher breaking strength
- reinforced live upper wire with copper conductor - therefore especially conductive

3 year warranty of UV stability



Ref. no.	Ground spike	Length	Height	Colour	Qty posts	Matching replacement post	€
27315	Single prong	50 m	90 cm	orange / white	14	27245	
27316	Double prong	50 m	90 cm	orange / white	14	27246	
27317	Single prong	50 m	108 cm	orange / white	14	27247	
27318	Double prong	50 m	108 cm	orange / white	14	27248	

Ref. no.	Description	Ground spike	Colour	Material	Post height	€
27245	Spare Post	Single prong	orange	Plastic	90 cm	
27246	Spare Post	Double prong	orange	Plastic	90 cm	
27247	Spare Post	Single prong	orange	Plastic	108 cm	
27248	Spare Post	Double prong	orange	Plastic	108 cm	
27249-5	Head Insulator for Pasture Netting		black	Plastic		
27322	Floor Anchor		black	Plastic		



Easy and fast repairs with our new Litzclip connectors.

TitanLight Net

Our „lightweight“ in the TitanNet range!

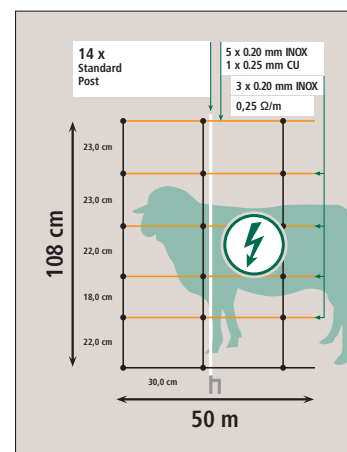
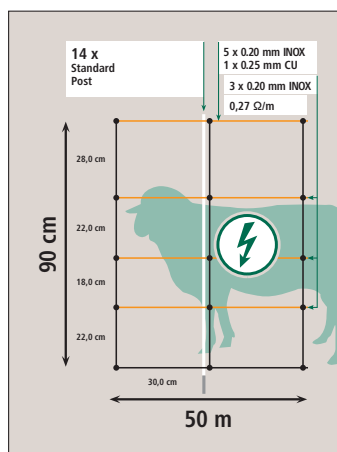
3 year warranty of UV stability



The increased mesh spacings allow ground game (e.g. hares and rabbits) and hedgehogs to pass safely, as well as providing a significant weight saving. This net is therefore extremely mobile, and particularly suitable for frequent repositioning. Vertically, rigid plastic struts are used instead of the soft poly wire material. These are permanently linked at intervals of 30 cm with the horizontal poly wires, ensuring a compact structure even on hilly and uneven terrain.

- Height 90 cm (5 horizontal poly wires) or 108 cm (6 horizontal poly wires), each available with single or double prong
- extremely stable welded knots
- 14 sturdy plastic posts with galvanized bottom tip
- strengthened, energized upper poly wire - increased conductivity thanks to the use of 5 stainless steel wires and a tin-plated copper wire
- we offer a 3-year warranty against UV damage for all plastic poly wires

- increased mesh spacings - less power leakage in heavy vegetation
- easy handling due to light weight
- stable plastic struts for optimum stability - even in hilly terrain
- ground game and hedgehogs can “slip through” without risk



Ref. no.	Ground spike	Length	Height	Colour	Qty posts	Matching replacement post	€
27351	Single prong	50 m	90 cm	orange / black	14	27202	
27352	Double prong	50 m	90 cm	orange / black	14	27203	
27353	Single prong	50 m	108 cm	orange / black	14	27229	
27354	Double prong	50 m	108 cm	orange / black	14	27230	

Ref. no.	Description	Ground spike	Colour	Material	Post height	€
27202	Spare Post	Single prong	white	Plastic	90 cm	
27203	Spare Post	Double prong	white	Plastic	90 cm	
27229	Spare Post	Single prong	white	Plastic	108 cm	
27230	Spare Post	Double prong	white	Plastic	108 cm	
27293	sheep netting repair set		orange			
27249-5	Head Insulator for Pasture Netting		black	Plastic		
27250-5	Base stopper for pasture netting		black	Plastic		
27322	Floor Anchor		black	Plastic		

Support Post for Field Netting

- ideally suited as supporting start and end posts, or for stabilising corners of pasture netting
- The post is simply pushed into the corners, and the net is thereby tensioned
- solid post made of galvanised round steel (ø 14 mm), with foot lug
- Post tapered at the bottom for easier penetration into the earth
- Jacketing with robust plastic tube (ø 20 mm) prevents power leakage (if electrifiable nets are used)



Utility model application registered!

Ref. no.	Description	Total height	post ø	Length ground nail	MOQ	Pieces / unit	€
27340	up to a height of 90 cm	120 cm	14 mm	25 cm	4 pieces	4 / pack	
27350	from a height of 90 cm	145 cm	14 mm	25 cm	4 pieces	4 / pack	

Door for electric fence nets

can be electrified

Enables quick and easy passage through fence netting. Practical door for your electric netting. Quick and easy to install. Can be installed to any position on the netting - can also be installed subsequently to a fence that has already be set up. The green netting of the door is electrifiable, the stable frame is insulated. When opening the door, the power does not have to be turned off.

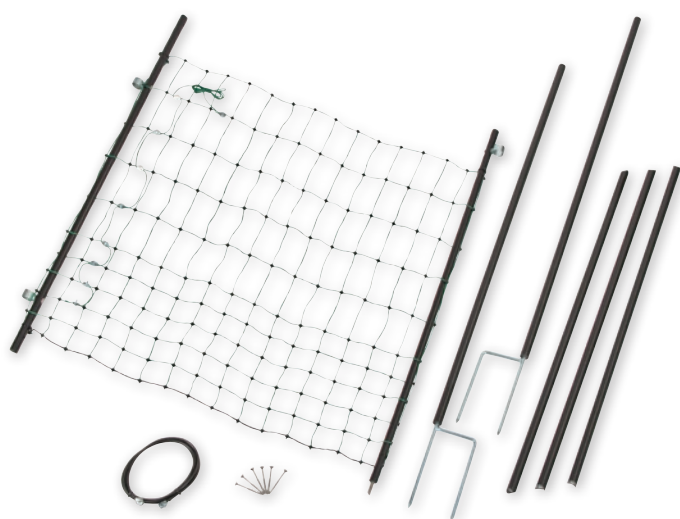
- fast and easy to open and close
- low weight, despite being sturdy and robust
- opening width: 86 cm (sufficient for most gardening equipment)
- incl. 2 jumbo standing posts, double-pointed
- electrifiable, incl. cable and connections
- quick and easy installation
- delivery includes connection and connection accessories

446517: suitable for all nets up to 106 cm in height

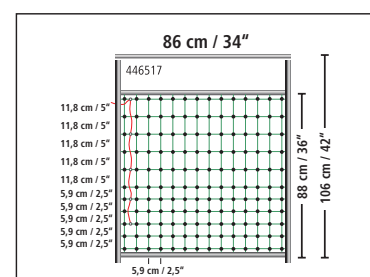
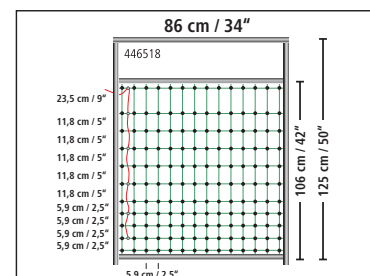
446518: extra-high version, suitable for a net height of over 95 cm up to 125 cm.



incl. connector accessories for optional electrification of the green net (the frame is insulated and can still be touched)



TV



Ref. no.	Description	Width	Height	€
446517	for nets up to 106 cm	86 cm	106 cm	
446518	for nets from 95 - 125 cm	86 cm	125 cm	

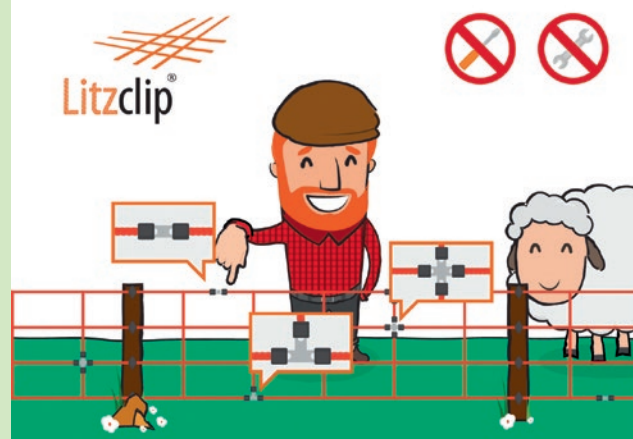
Litzclip® The new way of repairing nets quickly.

- Special key-shaped punched opening for easily inserting and securely fixing the wire
- Extremely resilient plastic sealing caps for locking and pressing the wire to the metal plate to ensure maximum conductivity
- PA plastic caps with UV stabiliser – no regranulate! Extremely long-lasting and impact-resistant.

Made in Germany



TV



Poly Wire Connector Litzclip®

- the straightforward solution, even for repairing a torn poly wire • special key-shaped punched opening for the easy introduction and secure fixing of the poly wire

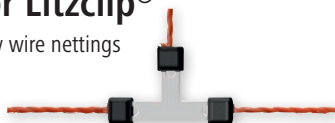
patented



Ref. no.	Material	can be used for	MOQ	Pieces / unit	€
442003/106	stainless steel	Poly wire up to Ø 3 mm	1 blister pack	10 / blister pack	
442003/101	stainless steel	Poly wire up to Ø 3 mm	1 blister pack	10 / blister pack	

Poly wire T-Connector Litzclip®

- suitable for use with all types of poly wire nettings



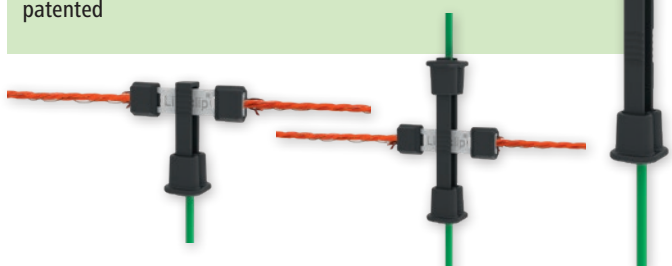
Ref. no.	Material	can be used for	MOQ	Pieces / unit	€
442015/056	stainless steel	Poly wire up to Ø 3 mm	1 blister pack	5 / blister pack	

Litzclip® Repair set for vertical struts in pasture nets

- the simple solution for repairing broken vertical struts in pasture nets
- connector plate made from stainless steel

Set includes: 2 x connector straight, 2 x cross connector, 2 x T-connector

Suitable for all standard electric fence systems with rigid vertical struts!
patented



Ref. no.	Material	Pieces / unit	€
442020/081	stainless steel	1 / blister pack	

Poly wire cross-connector Litzclip®

- suitable for use with all types of poly wire nettings

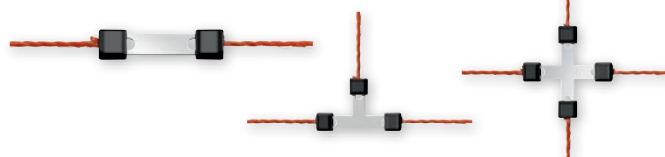


Ref. no.	Material	can be used for	MOQ	Pieces / unit	€
442014/056	stainless steel	Poly wire up to Ø 3 mm	1 blister pack	5 / blister pack	

Repair Set Litzclip®

- especially for repairing sheep, poultry and rabbit netting

Set includes: incl. 4 x straight 3 mm poly wire connectors, incl. 2 x 3 mm poly wire cross-connectors, incl. 2 x 3 mm poly wire T-connectors



Ref. no.	Material	MOQ	Pieces / unit	€
442018/086	stainless steel	1 blister pack	8 / blister pack	

Litzclip® Vertical Brace Connector for Pasture Nets

- the simple solution for repairing broken vertical struts in pasture nets

Suitable for all standard electric fence systems with rigid vertical struts!
patented



Ref. no.	Description	MOQ	Pieces / unit	€
442005/101	straight	1 blister pack	10 / blister pack	

Vole Basket

- ready-to-use protective cage against root biting • can be unfolded with just a few moves and without any tools
- made from extra-thin hexagonal wire mesh: 0.6 mm wire thickness, 16 mm mesh width • sealed to the side and bottom thanks to the double fold • all-round protection for root balls • made from galvanised material for protection during early years, then decomposes without leaving any residue • biologically safe

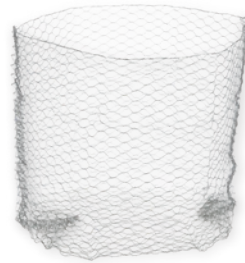
New product

NEW

Made in Germany



291171: suitable for roses, shrubs and bulbous plants
291172: suitable for trees and shrubs



Ref. no.	Height	Ø	€
291171	40 cm	35 cm	
291172	70 cm	60 cm	

Universal Fence

not electrifiable

- Demarcation and protection of individual land areas such as flower beds, vegetable gardens, green areas or ponds
- also suitable as short-term, mechanical barriers for small animals
- very suitable as a climbing aid
- very dense
- fast and simple assembly and removal
- very stable thanks to the 11 woven-in, glass fibre reinforced polyamide posts
- Post Head with Eyelet
- Weight: approx. 2.5 kg

New product

NEW

universally usable around the house, farm and garden



Ref. no.	Ground spike	Length	Height	Colour	Qty posts	€
291170	Single prong	20 m	80 cm	green	11	

Repair tape

for greenhouses

- UV resistance • weatherproof • very high bonding strength • hard-wearing
- ideal for repairing damaged greenhouse films • can also be used to repair glass panes and other surfaces • can be used both indoors and outdoors

New product

NEW



Ref. no.	Colour	Length	Width	Material thickness	€
291173	transparent	10 m	10 cm	0,15 mm	



SnailStop - the electric slug fence

good value and durable



Plug-and-play principle:
child's play to install and
use



unaffected by
environmental factors
(rain, heat, etc.)



reliable



 Made in
Germany

harmless to humans
and animals



environmentally
friendly



flexible in use and can be
extended as required





New product

NEW

SnailStop Electric Slug Fence

The innovative solution for protecting your vegetables from slugs safely and without poison

The electric slug fence protects your vegetables from slugs safely and without poison. Compared to other control methods, the electric slug fence is harmless to humans and animals! The operating principle: The live fence tape forms an insurmountable barrier for all kinds of slugs in the home garden. The fence tape has two parallel, electrically conductive contact strips. If the slug makes a connection between the two contact strips when trying to cross the fence strip, a small current flows for a short time. Due to the low fence voltage of 9 Volts (block battery), the slugs do not suffer any damage, but only feel an unpleasant tingling sensation and are immediately induced to turn around. For other animals and also for humans, the effect is not noticeable and completely harmless.

The self-adhesive fence tape can be easily and permanently attached to almost all types of surfaces (wood, metal, plastic, stone, concrete) and can be shortened if necessary. The fence tape can easily be extended with an optional 10 m fence tape (291128) or 20 m fence tape (291129), as well as the fence tape connectors (291127). No prior knowledge is required to connect the fence tapes to the power unit. The fence tape can be connected and supplied with power with the help of the contact clip, which is connected to the power unit.

Two control LEDs enable safe monitoring of the battery status and the power supply. By means of bed connectors (accessory: 291126), multiple beds can also be operated with a single power unit. This means the fence can be extended to a maximum length of 30 m.

- reliable
- environmentally friendly
- without poison
- non-fatal
- harmless to humans and animals
- Easy installation
- easy maintenance thanks to control LEDs
- can be extended



Set consisting of: 1 x power unit with connected contact clip and retaining plate (291125), 1 x 10 m fence tape (291128), 1 x 9 Volt battery, 1 x operating instructions



reliable and without poison!

Technical data:

Operating voltage:	9 V
Battery runtime:	approx. 6 months

Made in Germany



291128, 291129 fence tapes:

- allows fence extensions or repairs
- fence tape connector (Art. 291127) not included

291127 fence tape connector:

- for extending and repairing fence tapes

291126 Bed Connector:

- bed connectors allow multiple beds to be operated with a single power unit
- this means the fence can be extended to a maximum length of 30 m



Ref. no. €

291130 available from: Summer 2022

Ref. no.	Description	Length	MOQ	Pieces / unit	€
291125	Power unit with connected contact clip and retaining plate				
291126	Bed Connector				
291127	Fence Tape Connector		1 pack	2 / pack	
291128	Fence Tape	10 m			
291129	Fence Tape	20 m			



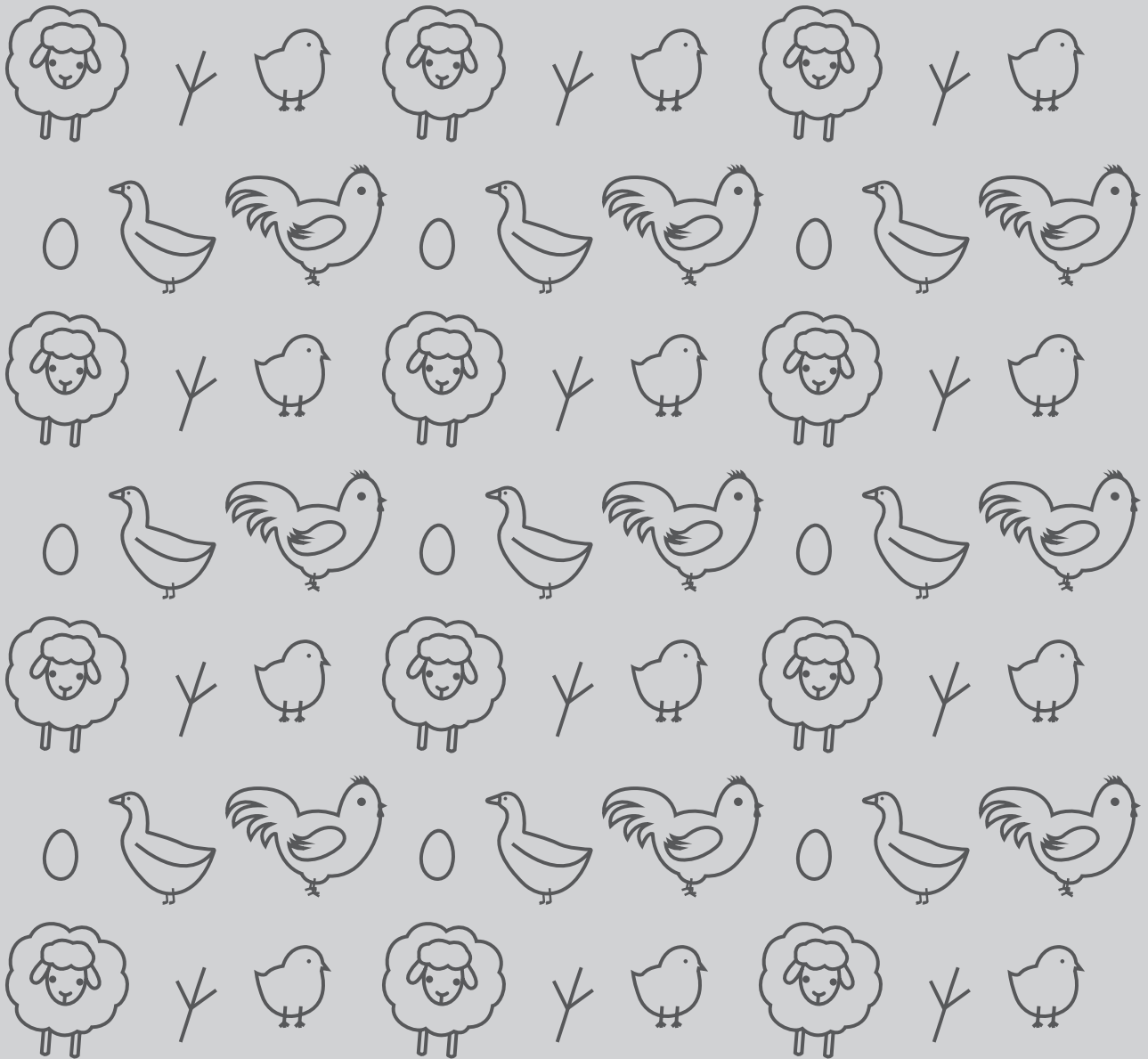
SNAIL STOP



DISCOVER THE ELECTRIC SLUG FENCE NOW

WWW.KERBL-SNAILSTOP.COM

PROTECTS VEGETABLES & SLUGS!



Albert Kerbl GmbH

Felizenzell 9
 84428 Buchbach
 Germany
 Tel. +49 8086 933 - 100
 Fax +49 8086 933 - 500
 E-Mail info@kerbl.com
www.kerbl.de

Kerbl Austria Handels GmbH

Wirtschaftspark 1
 9130 Poggersdorf
 Austria
 Tel. +43 4224 81555
 Fax. +43 4224 81555-629
 E-Mail order@kerbl-austria.at
www.kerbl-austria.at

Kerbl UK Limited

8 Lands End Way
 Oakham, Rutland
 LE15 6RF UK
 Phone +44 01572 722558
 Fax +44 01572 757614
 E-Mail enquiries@kerbl.co.uk
www.kerbl.co.uk

We are constantly striving to improve our stock of products and keep them right up to date. We reserve the right to make design changes. The publication of this catalogue renders all previous catalogues and prices lists for these products invalid. All prices provided are the manufacturer's recommended retail prices and are inclusive of VAT. All information is subject to typesetting and printing errors. Price alterations and errors reserved. Colours and designs may vary due to printing processes. Reprinting – even just of extracts – is only permitted only with prior consent.